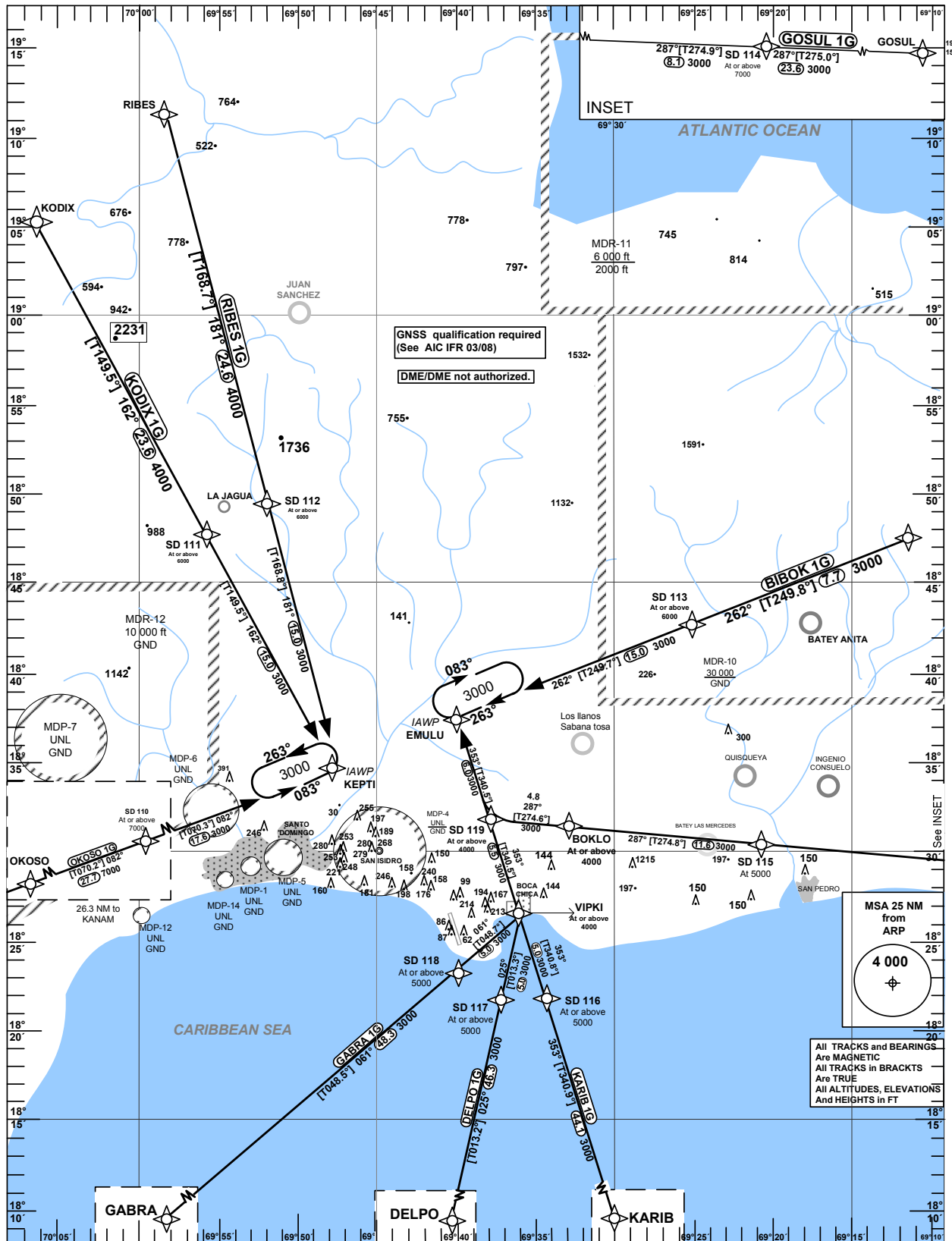


STANDARD ARRIVAL
CHART – INSTRUMENT
(STAR)

TRANSITION		VAR	Aerodrome Elevation 58 ft	Santo Domingo ACC 124.300		
ALT 17000	LEVEL FL 180			Las Americas APP 119.300	Las Americas TWR 118.100	121.900

SANTO DOMINGO
DE LAS AMERICAS INTL
RNAV (GNSS) RWY 17



STANDARD ARRIVAL
ROUTES-INSTRUMENT
(STAR)

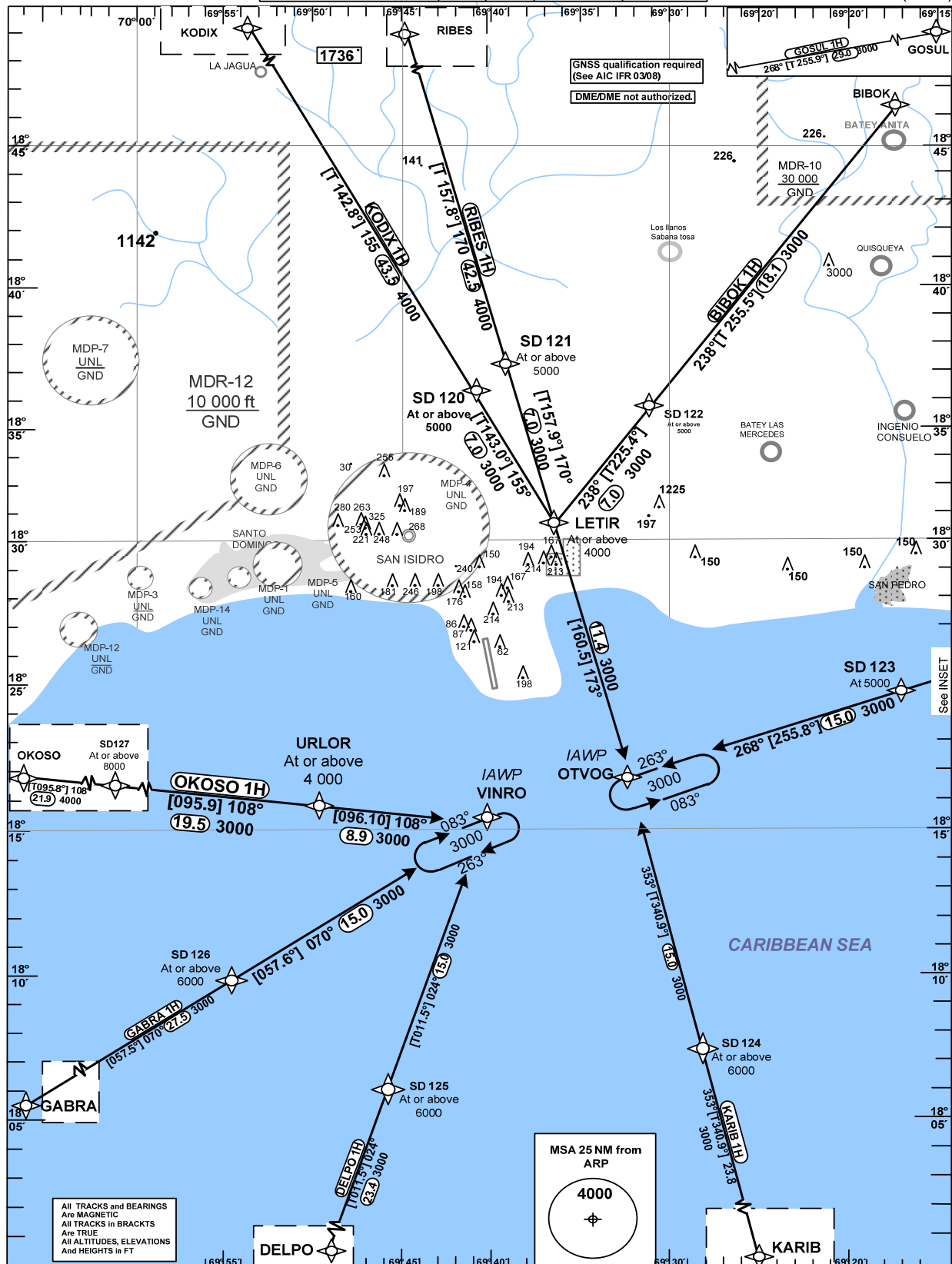
SANTO DOMINGO
DE LAS AMÉRICAS INTL
RNAV (GNSS) RWY17

Designator	Identification Significant Points	Constraints	MAG (True) Track	Dist NM	MNM IFR Cruising Level	Remarks
BIBOK 1G	BIBOK ONE GOLF Δ BIBOK Δ SD113 Δ EMULU	A7000+; K250- A6000+; K220- A3000+; K210-	261 (249.6) 261 (249.7)	7.7 15.0	3000 3000	
DELPO 1G	DELPO ONE GOLF Δ DELPO Δ SD117 Δ VIPKI Δ EMULU	A9000+; K250- A5000+; K220- A4000+; K210-; L A3000+; K210-	024 (013.2) 024 (013.3) 352 (340.5)	46.3 5.0 11.5	3000 3000 3000	
GABRA 1G	GABRA ONE GOLF Δ GABRA Δ SD118 Δ VIPKI Δ EMULU	A9000+; K250- A5000+; K220- A4000+; K210-; L A3000+; K210-	060 (048.5) 060 (048.7) 352 (340.5)	48.3 5.0 11.5	3000 3000 3000	
KARIB 1G	KARIB ONE GOLF Δ KARIB Δ SD116 Δ VIPKI Δ EMULU	A9000+; K250- A5000+; K220- A4000+; K210- A3000+; K210-	352 (340.9) 352 (340.8) 352 (340.5)	44.1 5.0 11.5	3000 3000 3000	
GOSUL 1G	GOSUL ONE GOLF Δ GOSUL Δ SD114 Δ SD115 Δ BOKLO Δ SD119 Δ EMULU	A9000+; K250- A7000+; K220- A5000 ; K220- A4000+; K210- A4000+; K210-; R A3000+; K210-	286 (275.0) 286 (274.9) 286 (274.6) 286 (274.6) 352 (340.5)	23.6 8.1 11.6 4.8 6.0	3000 3000 3000 3000 3000	
KODIX 1G	KODIX ONE GOLF Δ KODIX Δ SD111 Δ KEPTI	A9000+; K250- A6000+; K220- A3000+; K210-	161 (149.5) 161 (149.6)	23.6 15.0	4000 3000	
OKOSO 1G	OKOSO ONE GOLF Δ OKOSO Δ SD110 Δ KEPTI	A9000+; K250- A7000+; K220- A3000+; K210-	081 (070.2) 081 (070.3)	27.7 17.6	7000 3000	
RIBES 1G	RIBES ONE GOLF Δ RIBES Δ SD112 Δ KEPTI	A9000+; K250- A6000+; K220- A3000+; K210-	180 (168.7) 180 (168.8)	24.6 15.0	4000 3000	
DME/DME not authorized.						

SANTO DOMINGO
DE LAS AMERICAS INTL
RNAV (GNSS) RWY 35

Santo Domingo ACC	124.300	TRANSITION		VAR MVA	Aerodrome Elevation 58 ft
Las Americas APP	119.300	ALT	LEVEL		
Las Americas TWR	118.100	17000	FL 180		
	121.900				

STANDARD ARRIVAL
CHART – INSTRUMENT
(STAR)



STANDARD ARRIVAL
ROUTES-INSTRUMENT
(STAR)

SANTO DOMINGO
DE LAS AMERICAS INTL
RNAV (GNSS) RWY35

Designator	Identification Significant Points	Constraints	MAG (True) Track	Dist NM	MNM IFR Cruising Level	Remarks
BIBOK 1H	BIBOK ONE HOTEL Δ BIBOK Δ SD122 Δ LETIR Δ OTVOG	A9000+; K250- A5000+; K220- A4000+; K210-;L A3000+; K210-	237 (225.5) 237 (225.4) 172 (160.5)	18.1 7.0 11.4	3000 3000 3000	
DELPO 1H	DELPO ONE HOTEL Δ DELPO Δ SD125 Δ VINRO	A9000+; K250- A6000+; K220- A3000+; K210-	023 (011.5) 023 (011.5)	23.4 15.0	3000 3000	
GABRA 1H	GABRA ONE HOTEL Δ GABRA Δ SD126 Δ VINRO	A9000+; K250- A6000+; K220- A3000+; K210-	069 (057.5) 069 (057.6)	27.5 15.0	3000 3000	
KARIB 1H	KARIB ONE HOTEL Δ KARIB Δ SD124 Δ OTVOG	A9000+; K250- A6000+; K220- A3000+; K210-	352 (340.9) 352 (340.9)	23.8 15.0	3000 3000	
GOSUL 1H	GOSUL ONE HOTEL Δ GOSUL Δ SD123 Δ OTVOG	A9000+; K250- A5000 ; K220- A3000+; K210-	267 (255.9) 267 (255.8)	29.0 15.0	3000 3000	
KODIX 1H	KODIX ONE HOTEL Δ KODIX Δ SD120 Δ LETIR Δ OTVOG	A9000+; K250- A5000+; K220- A4000+; K210-;R A3000+; K210-	154 (142.8) 154 (143.0) 172 (160.5)	43.5 7.0 11.4	4000 3000 3000	
OKOSO 1H	OKOSO ONE HOTEL Δ OKOSO Δ SD127 Δ URLOR Δ VINRO	A9000+; K250- A8000+; K220- A4000+; K210- A3000+; K210-	107 (095.8) 107 (095.9) 107 (096.0)	21.9 19.5 8.9	4000 3000 3000	
RIBES 1H	RIBES ONE HOTEL Δ RIBES Δ SD121 Δ LETIR Δ OTVOG	A9000+; K250- A5000+; K220- A4000+; K210-; R A3000+; K210-	169 (157.8) 169 (157.9) 172 (160.5)	42.5 7.0 11.4	4000 3000 3000	
DME/DME not authorized.						

WAY POINT LIST

SANTO DOMINGO
DE LAS AMERICAS INTL

RNAV (GNSS) ARRIVAL ROUTES

IDENT	LAT	LONG
SD110	N 18 28 47.49	W 70 05 23.70
SD111	N 18 47 43.32	W 69 55 55.13
SD112	N 18 49 30.00	W 69 51 00.38
SD113	N 18 42 38.67	W 69 25 10.64
SD114	N 18 29 42.99	W 69 12 11.77
SD115	N 18 30 24.10	W 69 20 41.74
SD116	N 18 21 51.41	W 69 34 14.88
SD117	N 18 21 42.56	W 69 37 11.14
SD118	N 18 23 18.34	W 69 39 54.54
SD119	N 18 31 46.03	W 69 37 53.76
SD120	N 18 33 17.64	W 69 40 49.96
SD121	N 18 34 12.11	W 69 39 09.40
SD122	N 18 32 34.55	W 69 31 07.31
SD123	N 18 20 33.57	W 69 17 05.38
SD124	N 18 02 37.28	W 69 27 12.62
SD125	N 17 59 24.92	W 69 43 26.12
SD126	N 18 06 06.28	W 69 53 35.75
SD127	N 18 17 08.62	W 70 09 56.34
BOKLO	N 18 31 22.18	W 69 32 51.16
DELPO	N 17 36 24.00	W 69 48 19.00
EMULU	N 18 37 24.81	W 69 39 59.53
GABRA	N 17 51 15.00	W 70 17 58.00
KARIB	N 17 39 59.00	W 69 19 02.00
GOSUL	N 18 27 41.00	W 68 47 28.00
KEPTI	N 18 34 43.77	W 69 47 55.84
KODIX	N 19 08 11.00	W 70 08 33.00
LETIR	N 18 27 38.39	W 69 36 21.89
OKOSO	N 18 19 23.00	W 70 32 51.00
OTVOG	N 18 16 50.90	W 69 32 22.16
RIBES	N 19 13 47.00	W 69 56 05.00
URLOR	N 18 15 06.48	W 69 49 33.16
VINRO	N 18 14 10.20	W 69 40 17.64
VIPKI	N 18 26 35.80	W 69 35 58.72

Threshold Coordinates

THR	LAT	LONG
RWY 17	N 18 26 38.26	W 69 40 27.42
RWY 35	N 18 24 55.31	W 69 39 49.22