

| NAME | | ROUTING DESCRIPTION |
|---------|---------------|--|
| POKIL 1 | RW 08 084° | <p>TAKEOFF RW 08: Intercept PTA VOR/DME R-084° until 2700, then turn right to intercept assigned airway (A-636, W-9, A554). No Turns prior to crossing POKIL. Climb to minimum airway altitude or ATC assigned altitude, whichever is higher. Cross PTA 25.0 DME at or above minimum airway altitude.</p> |

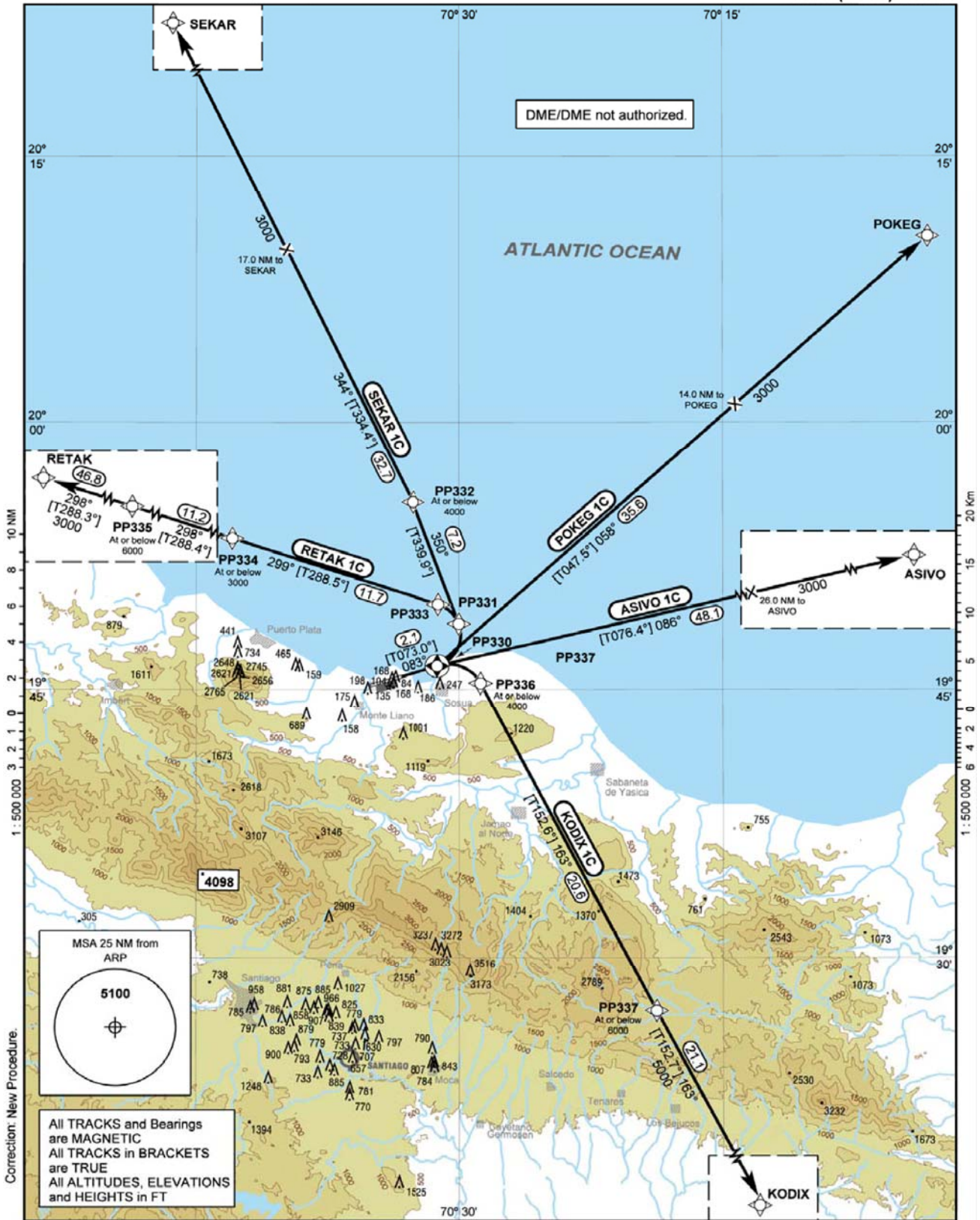
Intencionalmente en Blanco
Intentionally Left Blanc

STANDARD DEPARTURE
CHART - INSTRUMENT
(SID)

| TRANSITION | | VAR | Aerodrome Elevation 17 ft |
|--------------|----------------|-----|---------------------------------|
| ALT 17000 | LEVEL FL180 | | |

| | |
|-------------------|---------|
| Puerto Plata TWR | 118.000 |
| Puerto Plata APP | 121.900 |
| Santo Domingo ACC | 119.000 |
| | 124.300 |

PUERTO PLATA
GREGORIO LUPERON INTL
RNAV (GNSS) RWY 08



Correction: New Procedure.

All TRACKS and Bearings
are MAGNETIC
All TRACKS in BRACKETS
are TRUE
All ALTITUDES, ELEVATIONS
and HEIGHTS in FT

STANDARD DEPARTURE
 ROUTES-INSTRUMENT
 (SID)

PUERTO PLATA
 GREGORIO LUPERON INTL
 RNAV (GNSS) RWY08

| Designator | Route | After Take-Off | | Remarks |
|-----------------|---|----------------|------------------------------|---------|
| | | Climb to | Contact | |
| 1 | 2 | 3 | 4 | 5 |
| ASIVO 1C | ASIVO ONE CHARLIE Climb on track 083° to PP330; RT on track 086° to ASIVO (Δ) [A500+] - PP330[R] - ASIVO | 4000 ft | Santo Domingo ACC 124.300 | |
| KODIX 1C | KODIX ONE CHARLIE Climb on track 083° to PP330; RT via PP336 on track 163° via PP337 to KODIX (Δ) [A500+] - <u>PP330</u> [R] - PP336[A4000-] - PP337[A6000-] - KODIX. | | | |
| POKEG 1C | POKEG ONE CHARLIE Climb on track 083° to PP330; LT, on track 058° to POKEG (Δ). [A500+] - PP330[L] - POKEG. | | | |
| RETAK 1C | RETAK ONE CHARLIE Climb on track 083° to PP330; LT via PP333 on track 299° via PP334 and PP335 to RETAK (Δ) [A500+] - <u>PP330</u> [L] - PP333 - PP334[A3000-] - PP335[A6000-] - RETAK | | | |
| SEKAR 1C | SEKAR ONE CHARLIE Climb on track 083° to PP330; LT via PP331 on Track 350° to PP332; LT on track 344° to SEKAR(Δ) [A500+] - <u>PP330</u> [L] - PP331 - PP332[A4000-; L] - SEKAR. | | | |

Sample: PP 330 Fly-Over Waypoint

DME/DME not authorized.

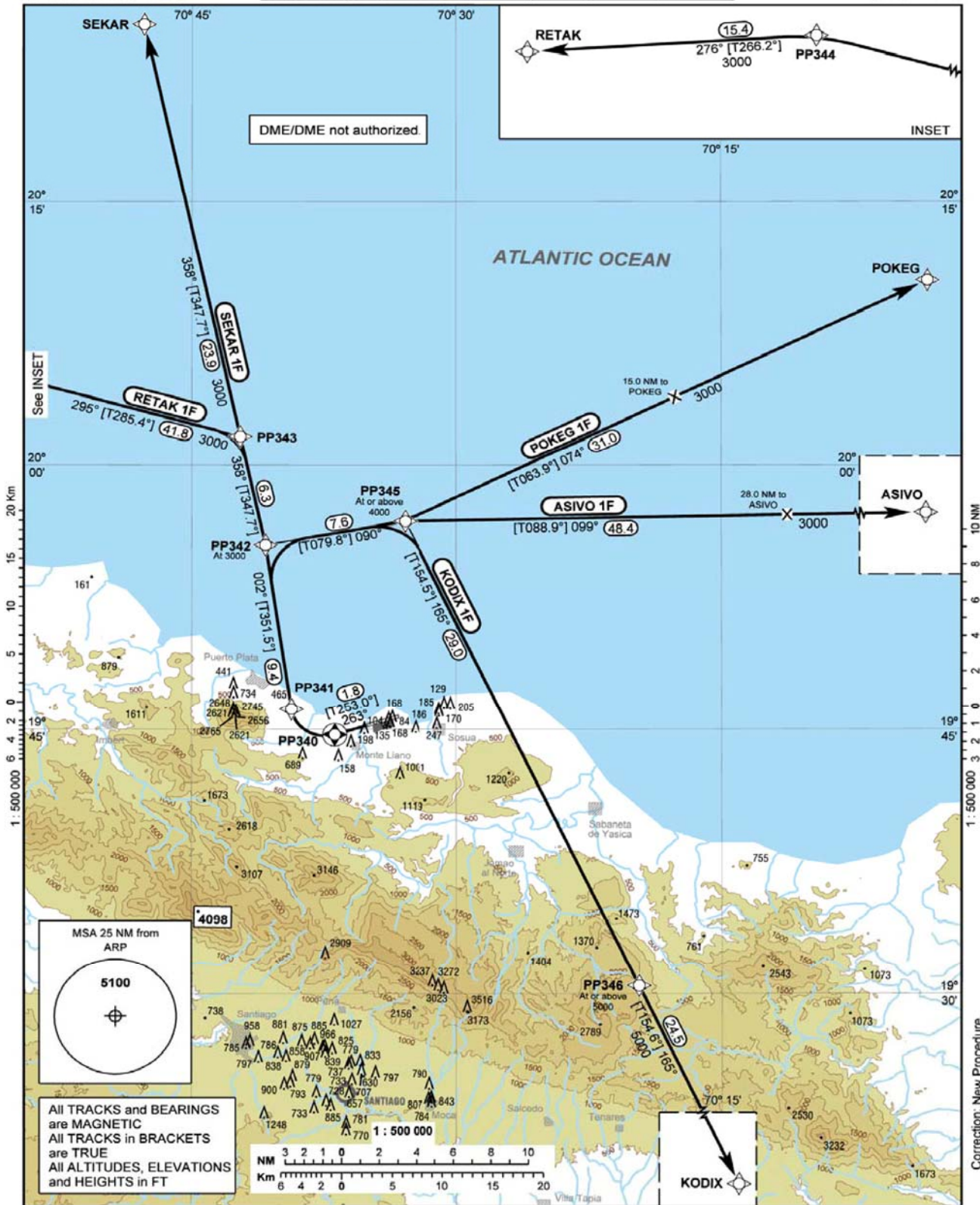
**PUERTO PLATA
GREGORIO LUPERON INTL
RNAV (GNSS) RWY26**

| | |
|-------------------|---------|
| Puerto Plata TWR | 118.000 |
| Puerto Plata APP | 121.900 |
| Santo Domingo ACC | 119.000 |
| | 124.300 |

| TRANSITION | | VAR |
|------------|-------|-----|
| ALT | LEVEL | |
| 17000 | FL180 | |

Aerodrome
Elevation
17 ft

**STANDARD DEPARTURE
CHART - INSTRUMENT
(SID)**



**STANDARD DEPARTURE
 ROUTES-INSTRUMENT
 (SID)**

**PUERTO PLATA
 GREGORIO LUPERON INTL
 RNAV (GNSS) RWY28**

| Designator | Route | After Take-Off | | Remarks |
|---|--|----------------|------------------------------|--|
| | | Climb to | Contact | |
| 1 | 2 | 3 | 4 | 5 |
| ASIVO 1F | ASIVO ONE FOXTROT Climb on track 263° to PP340; RT via PP341 on track 002° to PP342; RT, on track 090° to PP345; RT, on track 099° to ASIVO (Δ) Climb with 5.3%/320ft per NM until passing 3000. [A500+] — <u>PP340[R]</u> — PP341 — PP342[A3000; R] — PP345[A4000+; R] — ASIVO. | 4000 ft | Santo Domingo ACC 124.300 | Procedure Design Gradient due to Obstacles/Terrain. If unable to comply advise ATC prior to start-up and expect RWY08 Departure. |
| KODIX 1F | KODIX ONE FOXTROT Climb on track 263° to PP340; RT via PP341 on track 002° to PP342; RT, on track 090° to PP345; RT, on track 165° via PP346 to KODIX (Δ). Climb with 5.3%/320ft per NM until passing 3000. [A500+] — <u>PP340[R]</u> — PP341 — PP342[A3000; R] — PP345[A4000+; R] — PP346[A5000+] — KODIX. | | | |
| POKEG 1F | POKEG ONE FOXTROT Climb on track 263° to PP340; RT via PP341 on track 002° to PP342; RT, on track 090° to PP345; LT, on track 074° to POKEG (Δ). Climb with 5.3%/320ft per NM until passing 3000. [A500+] — <u>PP340[R]</u> — PP341 — PP342[A3000; R] — PP345[A4000+; L] — POKEG. | | | |
| RETAK 1F | RETAK ONE FOXTROT Climb on track 263° to PP340; RT via PP341 on track 002° to PP342; LT, on track 358° to PP343; LT, on track 295° to PP344; LT, on track 276° to RETAK (Δ). Climb with 5.3%/320ft per NM until passing 3000. [A500+] — <u>PP340[R]</u> — PP341 — PP342[A3000; L] P344[L] — RETAK. | | | |
| SEKAR 1F | SEKAR ONE FOXTROT Climb on track 263° to PP340; RT via PP341 on track 002° to PP342; LT, on track 358° to SEKAR (Δ). Climb with 5.3%/320ft per NM until passing 3000. [A500+] — <u>PP340[R]</u> — PP341 — PP342[A3000; L] — SEKAR. | | | |
| <p>Sample: <u>PP340</u> Fly-Over Waypoint</p> <p style="text-align: center;">DME/DME not authorized.</p> | | | | |

WAY POINT LIST

PUERTO PLATA
GREGORIO LUPERON INTL

RNAV (GNSS) DEPARTURE ROUTES

| IDENT | LAT | LONG |
|------------------|---------------|---------------|
| PP330 | N 19 46 19.70 | W 70 31 14.48 |
| PP331 | N 19 48 40.27 | W 70 30 00.41 |
| PP332 | N 19 55 30.02 | W 70 32 38.61 |
| PP333 | N 19 49 47.76 | W 70 31 11.42 |
| PP334 | N 19 53 18.15 | W 70 42 56.59 |
| PP335 | N 19 57 00.68 | W 70 54 13.33 |
| PP336 | N 19 45 20.88 | W 70 28 46.41 |
| PP337 | N 19 27 00.75 | W 70 18 46.43 |
| 17.0 NM to SEKAR | N 20 09 43.26 | W 70 39 51.84 |
| 14.0 NM to POKEG | N 20 01 01.35 | W 70 14 16.97 |
| 26.0 NM to ASIVO | N 19 51 32.65 | W 70 08 23.37 |
| PP340 | N 19 44 41.60 | W 70 36 54.24 |
| PP341 | N 19 46 09.29 | W 70 39 21.22 |
| PP342 | N 19 55 27.82 | W 70 40 49.30 |
| PP343 | N 20 01 38.98 | W 70 42 15.23 |
| PP344 | N 20 12 44.04 | W 71 25 07.73 |
| PP345 | N 19 56 48.79 | W 70 32 54.69 |
| PP346 | N 19 30 27.18 | W 70 19 40.31 |
| 15.0 NM to POKEG | N 20 03 53.67 | W 70 17 37.45 |
| 28.0 NM to ASIVO | N 19 57 10.50 | W 70 11 16.23 |
| ASIVO | N 19 57 36.00 | W 69 41 33.00 |
| KODIX | N 19 08 11.00 | W 70 08 33.00 |
| POKEG | N 20 10 30.00 | W 70 03 18.00 |
| RETAK | N 20 11 42.00 | W 71 41 30.00 |
| SEKAR | N 20 25 06.00 | W 70 47 42.00 |

Threshold Coordinates

| THR | LAT | LONG |
|--------|---------------|---------------|
| RWY 08 | N 19 45 13.82 | W 70 35 02.74 |
| RWY 26 | N 19 45 43.05 | W 70 33 21.51 |