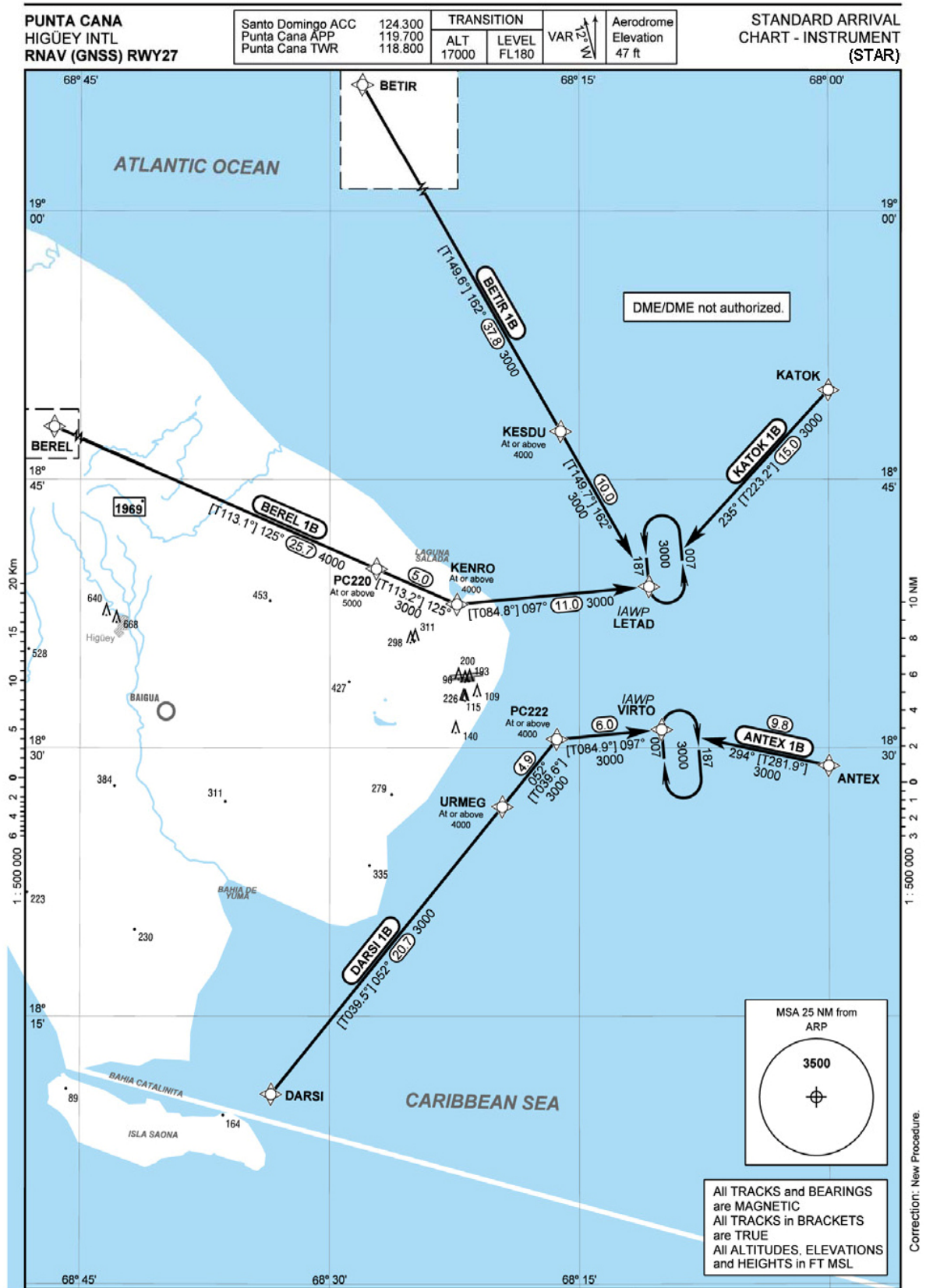


**STANDARD ARRIVAL
 ROUTES-INSTRUMENT
 (STAR)**

**PUNTA CANA
 HIGÜEY INTL
 RNAV (GNSS) RWY09**

Designator	Identification Significant Points	Constraints	MAG (True) Track	Dist NM	MNM IFR Cruising Level	Remarks
ANTEX 1A	ANTEX ONE ALPHA Δ ANTEX Δ PC215 Δ EMIRU Δ EMUTI	A8000+; K250- A5000+; K220-; L A4000+; K210- A3000+; K210-	288 (276.1) 277 (264.9) 277 (264.8)	14.7 5.0 11.6	3000 3000 3000	
BEREL 1A	BEREL ONE ALPHA Δ BEREL Δ PC210 Δ DASVO	A7000+; K250- A6000+; K220- A3000+; K210-	139 (126.5) 139 (126.5)	7.0 15.0	4000 3000	
BETIR 1A	BETIR ONE ALPHA Δ BETIR Δ PC211 Δ PC212 Δ BIBIL Δ DASVO	A9000+; K250- A9000; K220- A7000; K220- A4000+; K210- A3000+; K210-	189 (176.5) 189 (176.5) 189 (176.5) 189 (176.5)	22.2 6.1 7.5 7.5	3000 3000 3000 3000	
DARSI 1A	DARSI ONE ALPHA Δ DARSI Δ PC213 Δ EMUTI	A7000+; K250- A6000+; K220- A3000+; K210-	014 (002.2) 014 (002.2)	5.0 13.3	3000 3000	
KATOK 1A	KATOK ONE ALPHA Δ KATOK Δ PC214 Δ BOLBU Δ DASVO	A9000+; K250- A5000+; K220-; R A4000+; K210- A3000+; K210-	245 (233.4) 277 (264.9) 277 (264.8)	19.1 5.0 11.6	3000 3000 3000	

DME/DME not authorized.



STANDARD ARRIVAL
 ROUTES-INSTRUMENT
 (STAR)

PUNTA CANA
 HIGÜEY INTL
 RNAV (GNSS) RWY27

Designator	Identification Significant Points	Constraints	MAG (True) Track	Dist NM	MNM IFR Cruising Level	Remarks
ANTEX 1B	ANTEX ONE BRAVO Δ ANTEX Δ VIRTO	A5000+; K250- A3000+; K210-	294 (281.9)	9.8	3000	
BEREL 1B	BEREL ONE BRAVO Δ BEREL Δ PC220 Δ KENRO Δ LETAD	A9000+; K250+ A5000+; K220- A4000+; K210-; L A3000+; K210-	125(113.1) 125 (113.2) 097 (084.8)	25.7 5.0 11.0	4000 3000 3000	
BETIR 1B	BETIR ONE BRAVO Δ BETIR Δ KESDU Δ LETAD	A9000+; K250+ A4000+; K210- A3000+; K210-	162 (149.6) 162 (149.7)	37.8 10.0	3000 3000	
DARSI 1B	DARSI ONE BRAVO Δ DARSI Δ URMEG Δ PC222 Δ VIRTO	A9000+; K250+ A4000+; K210- A4000+; K210-; R A3000+; K210-	052 (039.5) 052 (039.6) 097 (084.9)	20.7 4.9 6.0	3000 3000 3000	
KATOK 1B	KATOK ONE BRAVO Δ KATOK Δ LETAD	A6000+; K250- A3000+; K210-	235 (223.2)	15.0	3000	

DME/DME not authorized.

WAY POINT LIST

PUNTA CANA
HIGÜEY INTL

RNAV (GNSS) ARRIVAL ROUTES

IDENT	LAT	LONG
PC210	N 18 46 01.00	W 68 46 13.87
PC211	N 18 58 14.23	W 68 34 52.75
PC212	N 18 52 05.13	W 68 34 29.26
PC213	N 18 15 39.96	W 68 33 18.71
PC214	N 18 38 33.62	W 68 16 09.62
PC215	N 18 30 33.69	W 68 15 24.31
PC220	N 18 40 00.51	W 68 27 11.25
PC222	N 18 30 28.79	W 68 16 21.13
ANTEX	N 18 29 00.00	W 68 00 00.00
BEREL	N 18 50 11.00	W 68 52 09.00
BETIR	N 19 20 35.11	W 68 36 16.47
BIBIL	N 18 44 34.20	W 68 34 00.60
BOLBU	N 18 38 06.53	W 68 21 24.27
DARSI	N 18 10 39.00	W 68 33 31.00
DASVO	N 18 37 03.28	W 68 33 31.99
EMIRU	N 18 30 06.62	W 68 20 38.71
EMUTI	N 18 29 03.42	W 68 32 45.83
KATOK	N 18 50 00.00	W 68 00 00.00
KENRO	N 18 38 01.63	W 68 22 20.96
KESDU	N 18 47 41.41	W 68 16 06.56
LETAD	N 18 39 01.14	W 68 10 48.00
URMEG	N 18 26 42.40	W 68 19 37.72
VIRTO	N 18 31 01.18	W 68 10 02.97

Threshold Coordinates

THR	LAT	LONG
RWY 09	N 18 33 57.97	W 68 22 41.01
RWY 27	N 18 34 07.07	W 68 20 55.68