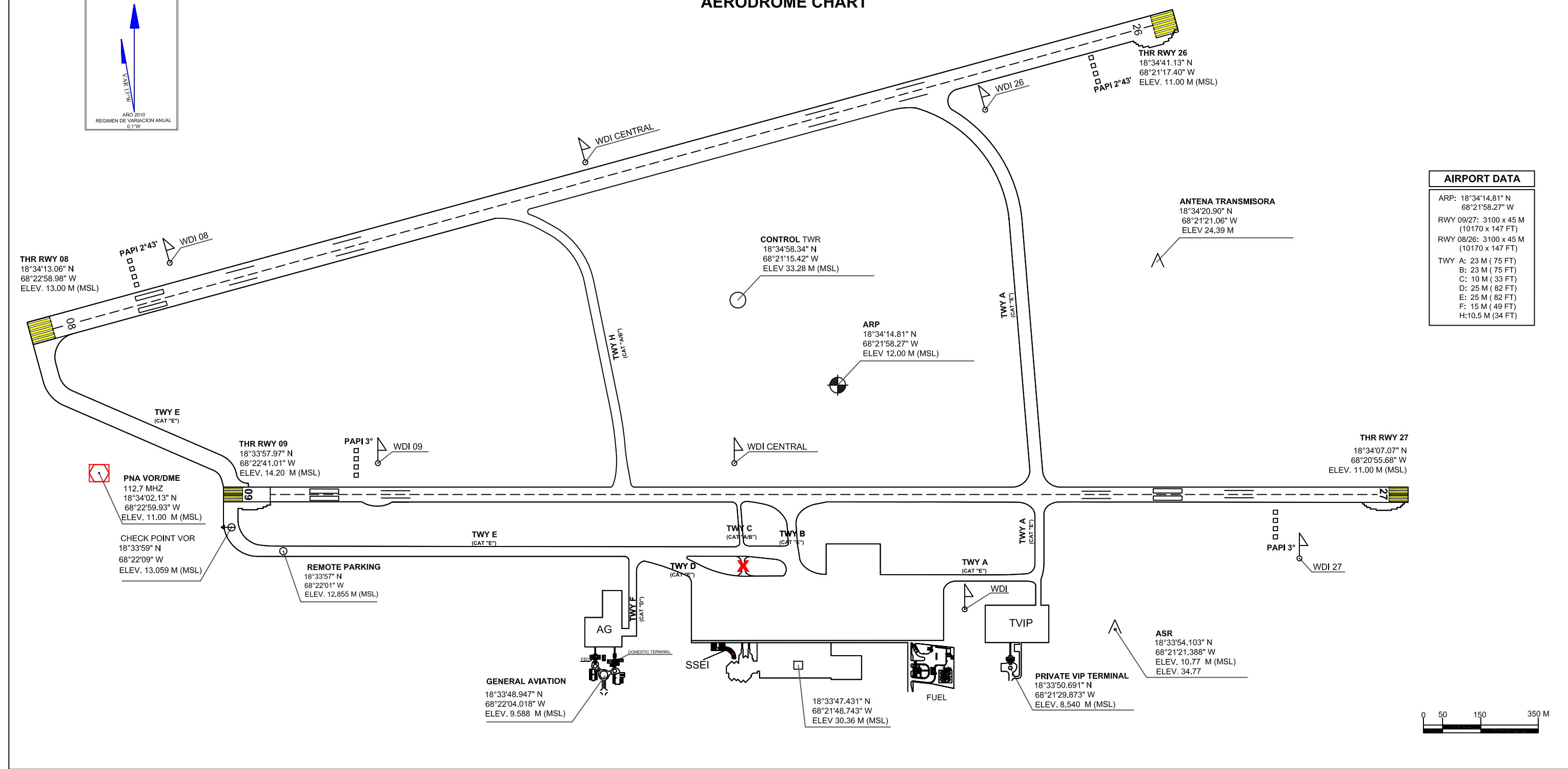
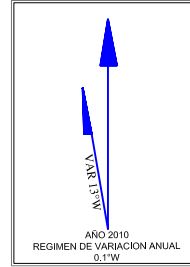


AEROPUERTO INT'L DE PUNTA CANA
PLANO DE AERODROMO
AERODROME CHART



AIRPORT DATA	
ARP:	18°34'14.81" N 68°21'58.27" W
RWY 09/27:	3100 x 45 M (10170 x 147 FT)
RWY 08/26:	3100 x 45 M (10170 x 147 FT)
TWY A:	23 M (75 FT)
B:	23 M (75 FT)
C:	10 M (33 FT)
D:	25 M (82 FT)
E:	25 M (82 FT)
F:	15 M (49 FT)
H:	10.5 M (34 FT)