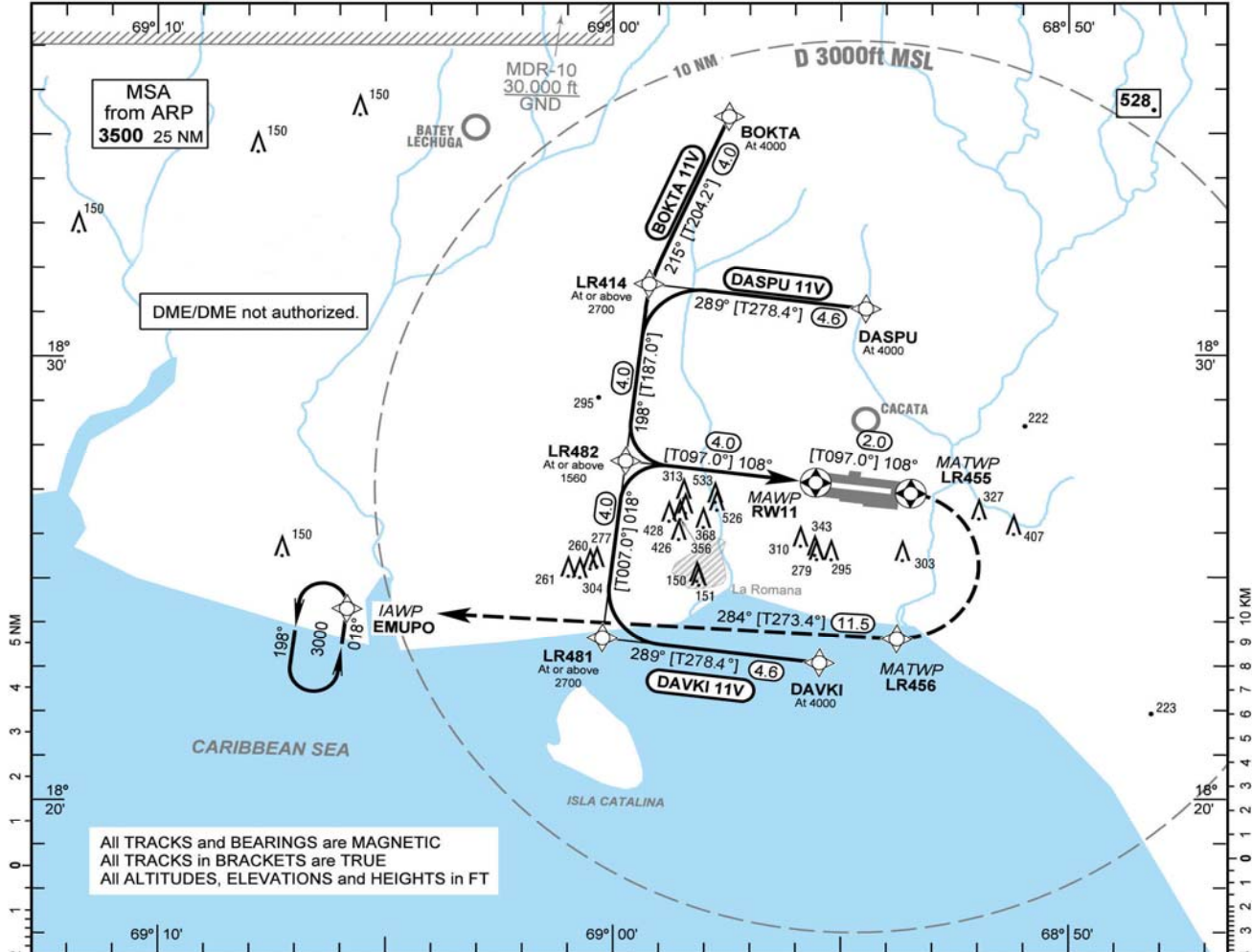


VISUAL APPROACH CHART	TRANSITION		Aerodrome Elevation 240 ft	VAR \nearrow 2.3A	Threshold Elevation 240 ft	Santo Domingo ACC	124.300
	ALT 17000	LEVEL FL180				De Las Americas APP	119.300

LA ROMANA
CASA DE CAMPO INTL
VISUAL (RNAV(GNSS) guided)
RWY11



1:250 000
5 NM
4
3
2
1
0
1
2
3
4
5
6
7
8
9
10 KM

1:250 000
5 NM
4
3
2
1
0
1
2
3
4
5
6
7
8
9
10 KM

CONDITIONS

- Pilot must maintain visual reference to the terrain and report the aerodrome in sight.
- Pilot is requesting or ATC suggests a visual approach.
- Radar vectors can be issued by ATC to join the visual approach procedure.

WEATHER MINIMA

Ground visibility : \geq 5 Km
Ceiling : \geq 3700 ft GND

MISSED APPROACH

Climb on track 108° to LR455; RT via LR456 on track 284° to EMUPO to 3000 or in accordance with ATC instructions.

WAYPOINT LIST (WGS 84)

WAYPOINT COORDINATES

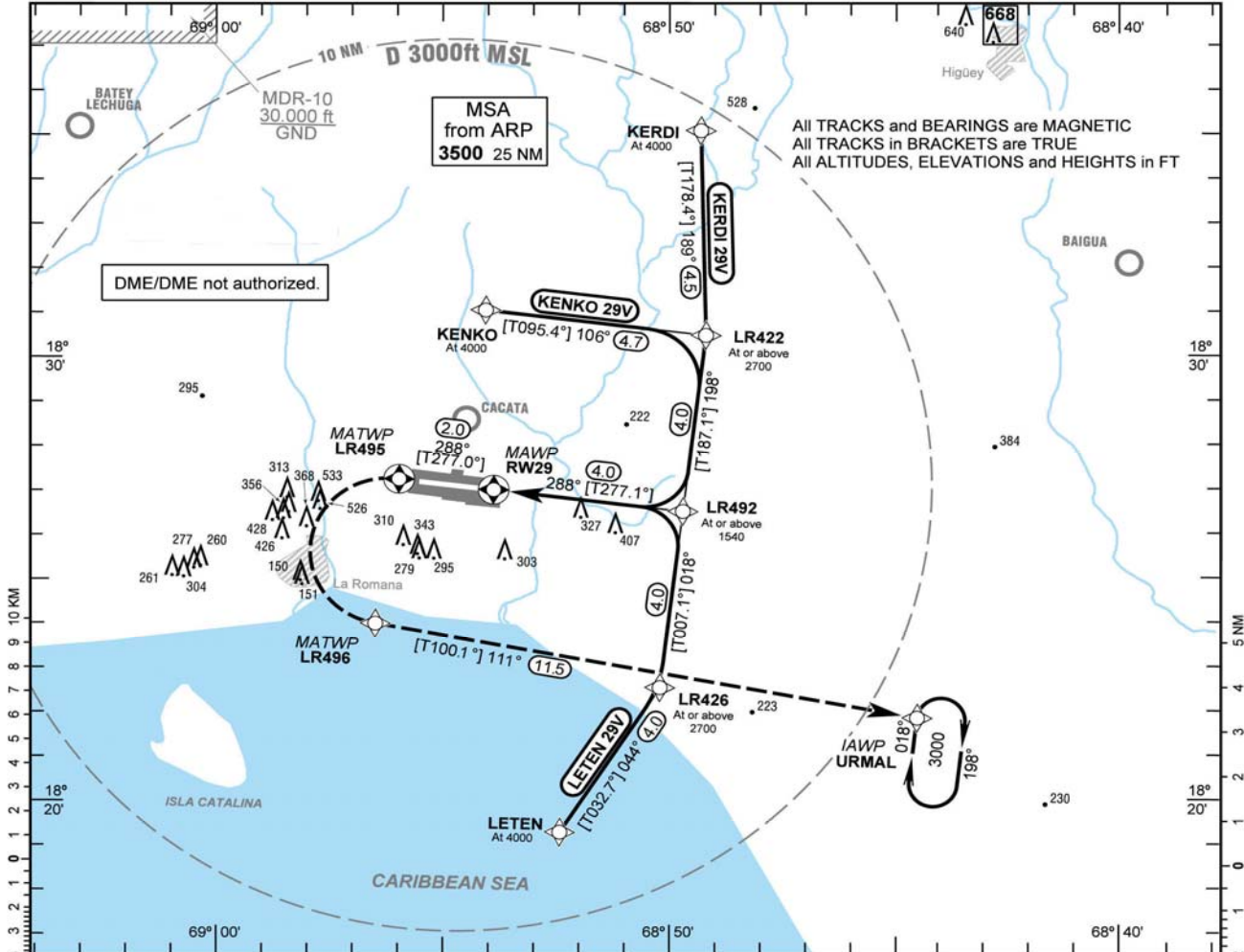
WP	LATITUDE	LONGITUDE	REMARKS
BOKTA	N 18 35 23.28	W 68 57 26.57	
DASPU	N 18 31 03.38	W 68 54 26.05	
DAVKI	N 18 23 05.12	W 68 55 27.75	
EMUPO	N 18 24 24.84	W 69 05 50.54	IAWP
LR414	N 18 31 43.43	W 68 59 10.32	
LR481	N 18 23 45.18	W 69 00 12.21	
LR482	N 18 27 44.30	W 68 59 41.28	
LR455	N 18 27 00.06	W 68 53 25.42	MATWIP
LR456	N 18 23 37.35	W 68 53 45.71	MATWIP
RW11	N 18 27 14.82	W 68 55 30.70	MAWP

ROUTE DESCRIPTION

ROUTE	WAYPOINT SEQUENCE
BOKTA 11V	BOKTA[A4000] - LR414[K185-; A2700+; L] - LR482[K185-; A1560+; L] - RW11
DASPU 11V	DASPU[A4000] - LR414[K185-; A2700+; L] - LR482[K185-; A1560+; L] - RW11
DAVKI 11V	DAVKI[A4000] - LR481[K185-; A2700+; R] - LR482[K185-; A1560+; R] - RW11

Correction: New Procedure.

LA ROMANA CAMPO DE CASA INTL VISUAL (RNAV (GNSS) guided) RWY29	Santo Domingo ACC 124.300 De Las Americas APP 119.300 La Romana TWR 118.600	TRANSITION ALT 17000 LEVEL FL180		Aerodrome Elevation 240 ft	VAR 12°	Threshold Elevation 217 ft	VISUAL APPROACH CHART
	DME/DME not authorized.						



CONDITIONS

- Pilot must maintain visual reference to the terrain and report the aerodrome in sight.
- Pilot is requesting or ATC suggests a visual approach.
- Radar vectors can be issued by ATC to join the visual approach procedure.

WEATHER MINIMA

Ground visibility : \geq 5 Km
 Ceiling : \geq 3700 ft GND

MISSED APPROACH

Climb on track 288° to LR495; LT via LR496 on track 112° to URMAL to 3000 or in accordance with ATC instructions.

WAYPOINT LIST (WGS 84)

WAYPOINT COORDINATES

WP	LATITUDE	LONGITUDE	REMARKS
KENKO	N 18 30 59.39	W 68 54 02.86	
KERDI	N 18 35 01.52	W 68 49 17.32	
LETEN	N 18 19 13.93	W 68 52 25.85	
URMAL	N 18 21 54.39	W 68 44 33.02	IAWP
LR422	N 18 30 32.66	W 68 49 09.44	
LR426	N 18 22 34.40	W 68 50 11.24	
LR492	N 18 26 27.08	W 68 49 41.92	
LR495	N 18 27 17.82	W 68 55 56.20	MATWP
LR496	N 18 23 56.41	W 68 56 29.73	MATWP
RW29	N 18 27 03.07	W 68 53 50.91	MAWP

ROUTE DESCRIPTION

ROUTE	WAYPOINT SEQUENCE
KENKO 29V	KENKO[A4000] - LR422[K185-; A2700+; R] - LR492[K185-; A1540+; R] - RW29
KERDI 29V	KERDI[A4000] - LR422[K185-; A2700+; R] - LR492[K185-; A1540+; R] - RW29
LETEN 29V	LETEN[A4000] - LR426[K185-; A2700+; L] - LR492[K185-; A1540+; L] - RW29

Correction: New Procedure.