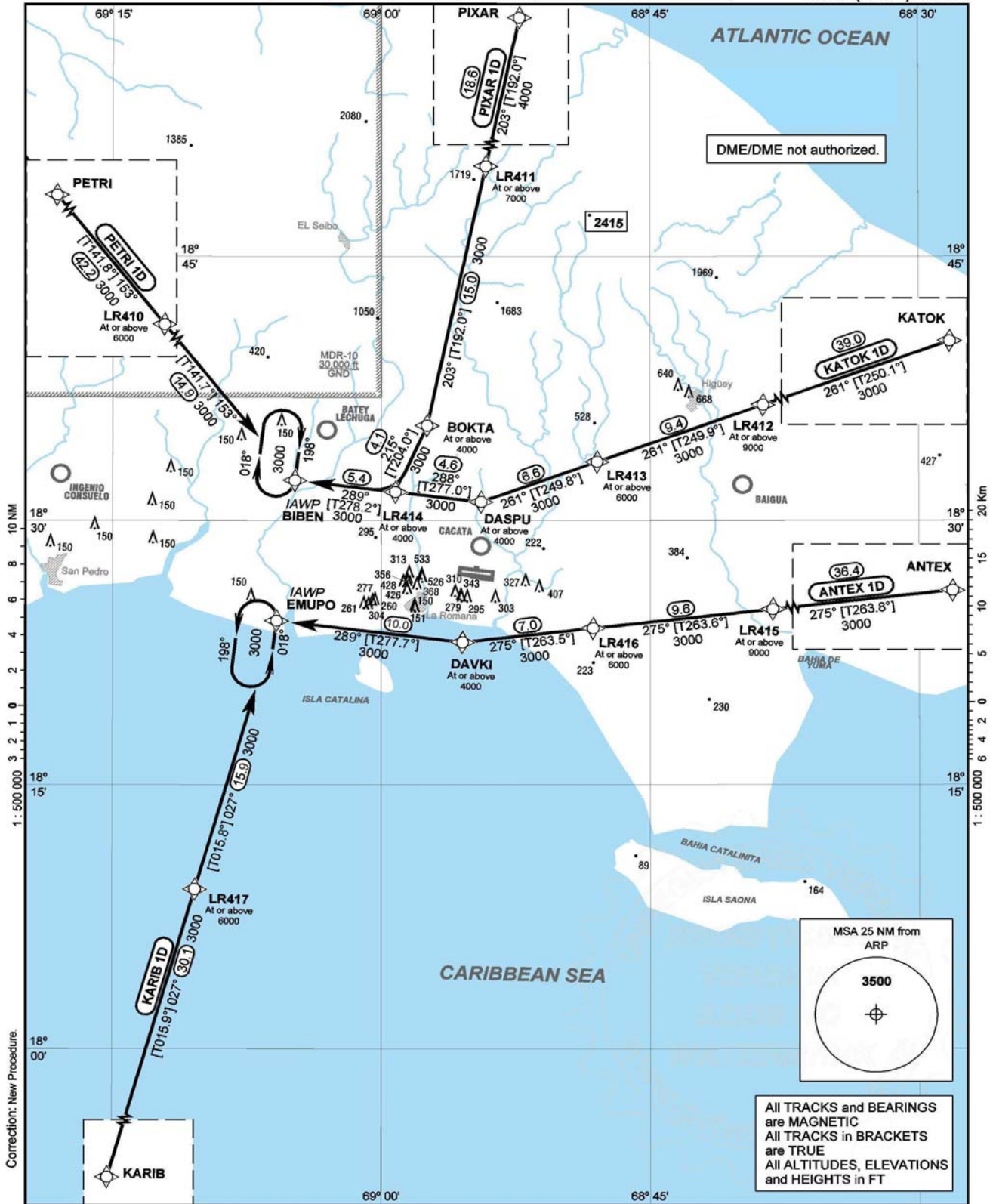


STANDARD ARRIVAL
CHART - INSTRUMENT
(STAR)

TRANSITION		VAR	Aerodrome Elevation 240 ft	Santo Domingo ACC	124.300
ALT	LEVEL			De Las Americas APP	119.300
17000	FL180			La Romana TWR	118.600

LA ROMANA
CASA DE CAMPO INTL
RNAV (GNSS) RWY11




STANDARD ARRIVAL
ROUTES – INSTRUMENT
(STAR)

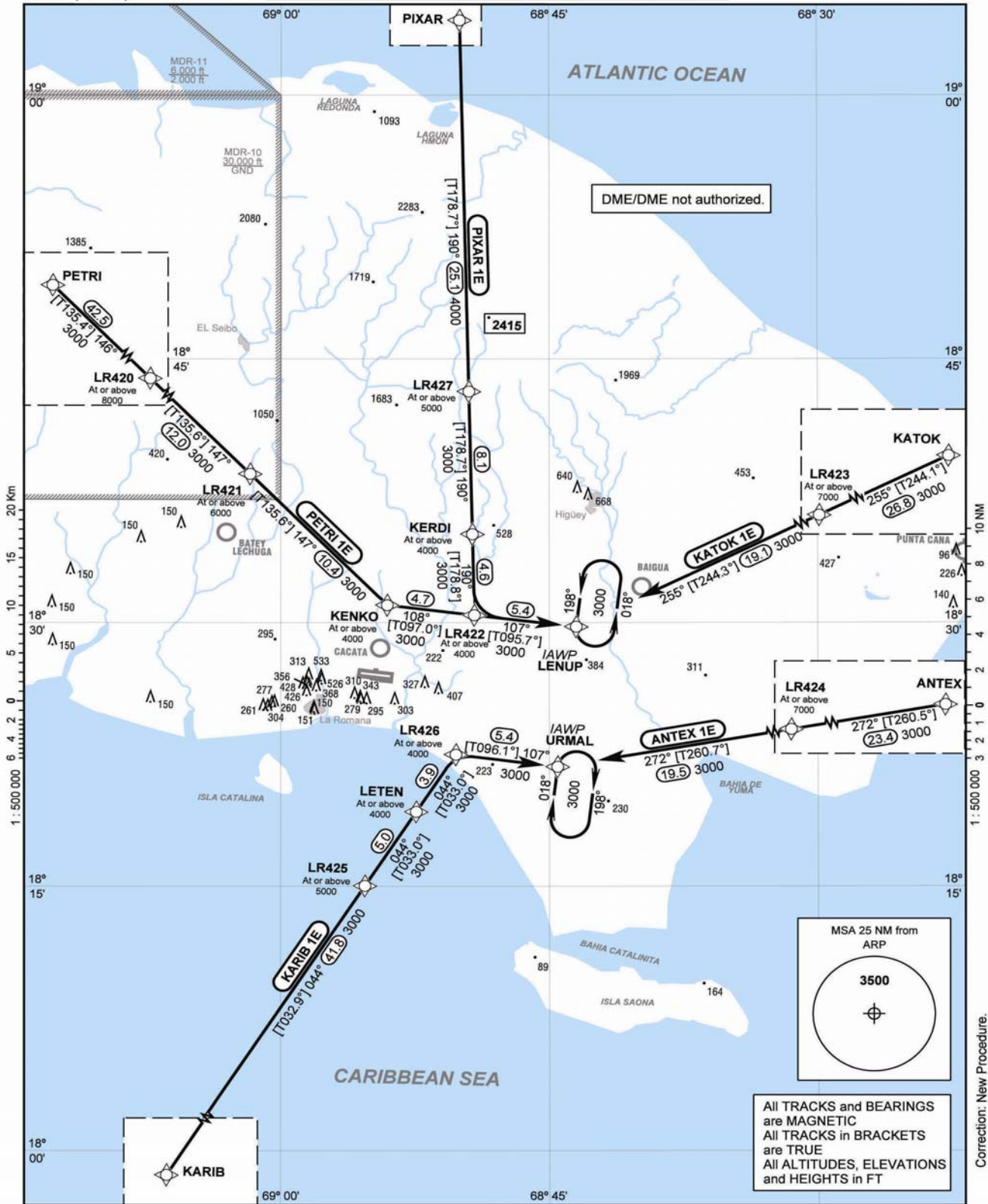
LA ROMANA
CASA DE CAMPO INTL
RNAV (GNSS) RWY11

Designator	Identification Significant Points	Constraints	MAG (True) Track	Dist NM	MNM IFR Cruising Level	Remarks
ANTEX 1D	ANTEX ONE DELTA					
	Δ ANTEX	A9000+; K250-	275 (263.8)	36.4	3000	
	Δ LR415	A9000+; K220-	275 (263.6)	9.6	3000	
	Δ LR416	A6000+; K220-	275 (263.5)	7.0	3000	
	Δ DAVKI	A4000+; K210-; R	288 (277.0)	9.9	3000	
	Δ EMUPO	A3000+; K210-				
KARIB 1D	KARIB ONE DELTA					
	Δ KARIB	A9000+; K250+	027 (015.9)	30.1	3000	
	Δ LR417	A6000+; K220-	027 (015.9)	15.8	3000	
	Δ EMUPO	A3000+; K210-				
KATOK 1D	KATOK ONE DELTA					
	Δ KATOK	A9000+; K250+	261 (250.1)	39.0	3000	
	Δ LR412	A9000+; K220-	261 (249.9)	9.4	3000	
	Δ LR413	A6000+; K220-	261 (249.8)	6.6	3000	
	Δ DASPU	A4000+; K210-; R	288 (277.0)	10.0	3000	
	Δ BIBEN	A3000+; K210-				
PETRI 1D	PETRI ONE DELTA					
	Δ PETRI	A9000+; K250+	153 (141.8)	42.2	3000	
	Δ LR410	A6000+; K220-	153 (142.0)	15.0	3000	
	Δ BIBEN	A3000+; K210-				
PIXAR 1D	PIXAR ONE DELTA					
	Δ PIXAR	A9000+; K250-	203 (192.0)	18.6	4000	
	Δ LR411	A7000+; K220-	203 (192.0)	15.0	3000	
	Δ BOKTA	A4000+; K210-; R	215 (204.0)	4.1	3000	
	Δ LR414	A4000+; K210-; R	288 (277.0)	5.4	3000	
	Δ BIBEN	A3000+; K210-				
DME/DME not authorized.						

LA ROMANA
CASA DE CAMPO INTL
RNAV (GNSS) RWY29

Santo Domingo ACC	124.300	TRANSITION		VAR 	Aerodrome Elevation 240 ft
De Las Americas APP	119.300	ALT	LEVEL		
La Romana TWR	118.600	17000	FL180		

STANDARD ARRIVAL
CHART - INSTRUMENT
(STAR)



LA ROMANA
CASA DE CAMPO INTL
RNAV (GNSS) RWY29

STANDARD ARRIVAL
ROUTES – INSTRUMENT
(STAR)

Designator	Identification Significant Points	Constraints	MAG (True) Track	Dist NM	MNM IFR Cruising Level	Remarks
ANTEX 1E	ANTEX ONE ECHO					
	Δ ANTEX	A9000+; K250-	272 (260.5)	23.4	3000	
	Δ LR424	A7000+; K220-	272 (260.4)	19.5	3000	
	Δ URMAL	A3000+; K210-				
KARIB 1E	KARIB ONE ECHO					
	Δ KARIB	A9000+; K250+	044 (032.9)	41.8	3000	
	Δ LR425	A5000+; K220-	044 (033.0)	5.0	3000	
	Δ LETEN	A4000+; K210-	044 (033.0)	3.9	3000	
	Δ LR426	A4000+; K210-; R	108 (097.3)	5.4	3000	
	Δ URMAL	A3000+; K210-				
KATOK 1E	KATOK ONE ECHO					
	Δ KATOK	A9000+; K250+	255 (244.1)	26.8	3000	
	Δ LR423	A7000+; K220-	255 (244.0)	19.1	3000	
PETRI 1E	PETRI ONE ECHO					
	Δ PETRI	A9000+; K250+	146 (135.4)	42.5	3000	
	Δ LR420	A8000+; K220-	147 (135.6)	12.0	3000	
	Δ LR421	A6000+; K220-	147 (135.6)	10.4	3000	
	Δ KENKO	A4000+; K210-; L	108 (096.9)	10.1	3000	
	Δ LENUP	A3000+; K210-				
PIXAR 1E	PIXAR ONE ECHO					
	Δ PIXAR	A9000+; K250-	190 (178.7)	25.1	4000	
	Δ LR427	A5000+; K220-	190 (178.7)	8.1	3000	
	Δ KERDI	A4000+; K210-	190 (178.8)	4.6	3000	
	Δ LR422	A4000+; K210-; L	108 (096.9)	5.4	3000	
	Δ LENUP	A3000+; K210-				
DME/DME not authorized.						

WAY POINT LIST

LA ROMANA
CASA DE CAMPO INTL

RNAV (GNSS) ARRIVAL ROUTES

IDENT	LAT	LONG
LR410	N 18 44 08.43	W 69 14 32.84
LR411	N 18 50 07.22	W 68 54 10.23
LR412	N 18 36 34.41	W 68 38 41.12
LR413	N 18 33 19.88	W 68 47 57.05
LR414	N 18 31 37.02	W 68 59 12.25
LR415	N 18 24 57.84	W 68 38 08.85
LR416	N 18 23 52.75	W 68 48 10.74
LR417	N 18 09 03.76	W 69 10 23.59
LR420	N 18 47 03.68	W 69 10 33.43
LR421	N 18 38 27.43	W 69 01 42.51
LR422	N 18 30 32.66	W 68 49 09.44
LR423	N 18 38 12.29	W 68 25 25.10
LR424	N 18 25 05.07	W 68 24 20.73
LR425	N 18 15 01.44	W 68 55 17.71
LR426	N 18 22 34.40	W 68 50 11.24
LR427	N 18 43 08.57	W 68 49 29.14
ANTEX	N 18 29 00.00	W 68 00 00.00
BIBEN	N 18 32 23.09	W 69 04 48.64
BOKTA	N 18 35 23.28	W 68 57 26.57
DASPU	N 18 31 03.38	W 68 54 26.05
DAVKI	N 18 23 05.12	W 68 55 27.75
EMUPO	N 18 24 24.84	W 69 05 50.54
KARIB	N 17 39 59.00	W 69 19 02.00
KATOK	N 18 50 00.00	W 68 00 00.00
KENKO	N 18 30 59.39	W 68 54 02.86
KERDI	N 18 35 01.52	W 68 49 17.32
LENUP	N 18 29 52.65	W 68 43 31.23
LETEN	N 18 19 13.93	W 68 52 25.85
PETRI	N 19 17 32.00	W 69 42 05.00
PIXAR	N 19 08 23.00	W 68 50 06.00
URMAL	N 18 21 54.39	W 68 44 33.02

Threshold Coordinates

THR	LAT	LONG
RWY 11	N 18 27 08.44	W 68 55 32.48
RWY 29	N 18 26 56.69	W 68 53 52.72