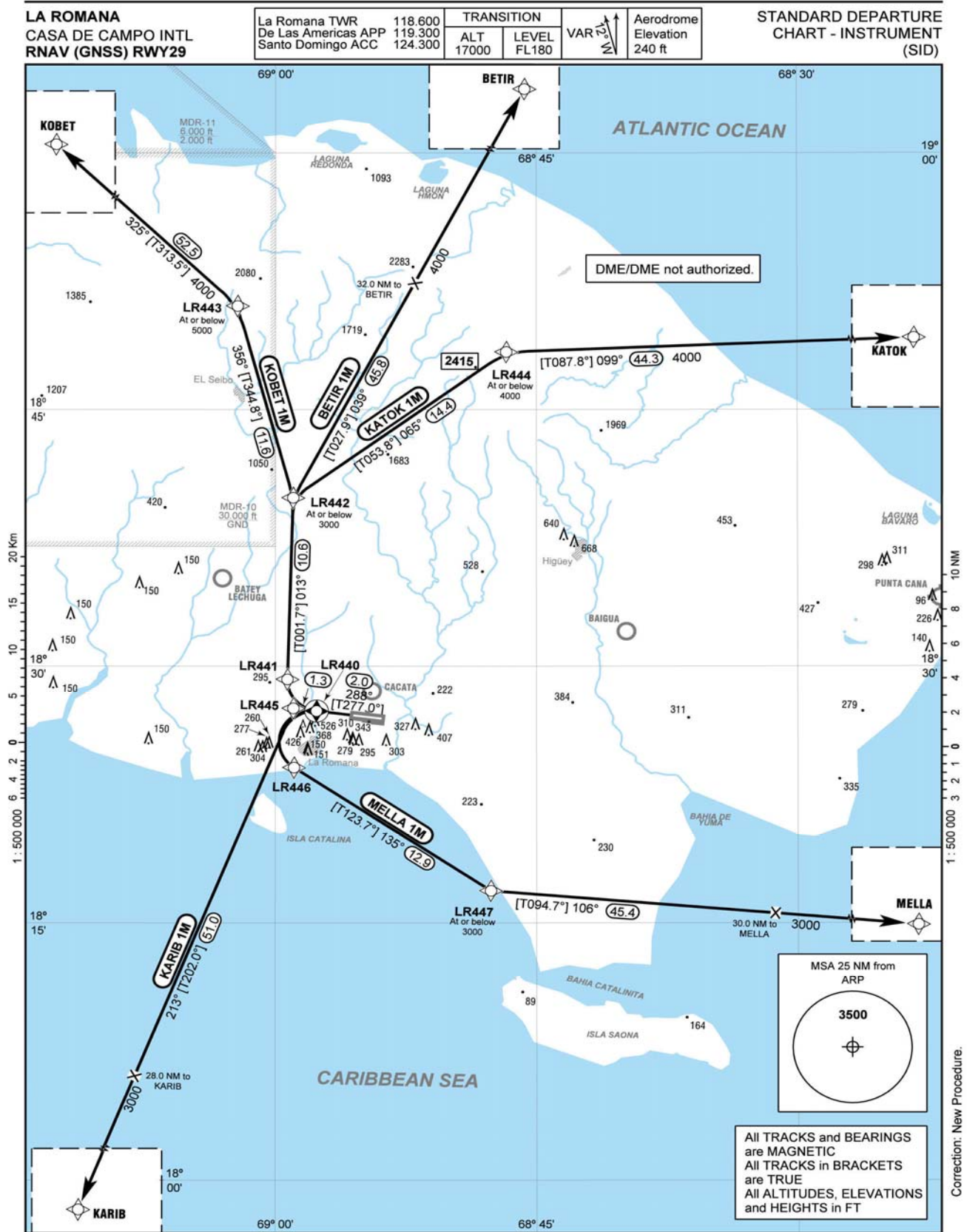


STANDARD DEPARTURE
ROUTES – INSTRUMENT
(SID)

LA ROMANA
CASA DE CAMPO INTL
RNAV (GNSS) RWY11

Designator	Route	After Take-Off		Remarks
		Climb to	Contact	
1	2	3	4	5
BETIR 1K	BETIR ONE KILO Climb on track 108° to LR430; LT via LR431 on track 025° to BETIR(Δ). [A700+] – LR430[L] – LR431 – BETIR.	4000 ft	Santo Domingo ACC 124.300	
KARIB 1K	KARIB ONE KILO Climb on track 108° to LR430; RT via LR436 on track 191° to LR437; RT, on track 227° to KARIB(Δ). [A700+] – LR430[R] – LR436 – LR437[A3000-; R] – KARIB.			
KATOK 1K	KATOK ONE KILO Climb on track 108° to LR430; LT, on track 084° to LR434; LT, on track 073° to KATOK(Δ). [A700+] – LR430[L] – LR434[A5000-; L] – KATOK.			
KOBET 1K	KOBET ONE KILO Climb on track 108° to LR430; LT via LR432 on track 331° via LR433 to KOBET(Δ). [A700+] – LR430[L] – LR432 – LR433[A3000-] – KOBET.			
MELLA 1K	MELLA ONE KILO Climb on track 108° to LR430; RT, on track 127° to LR435; LT, on track 114° to MELLA(Δ). [A700+] – LR430[R] – LR435[A5000-; L] – MELLA.			
<p>Sample: <u>LR430</u> Fly-Over Waypoint</p> <p>DME/DME not authorized.</p>				



LA ROMANA
CASA DE CAMPO INTL
RNAV (GNSS) RWY29

STANDARD DEPARTURE
ROUTES – INSTRUMENT
(SID)

Designator	Route	After Take-Off		Remarks
		Climb to	Contact	
1	2	3	4	5
BETIR 1M	BETIR ONE MIKE Climb on track 288° to LR440; RT via LR441 on track 013° to LR442; RT, on track 039° to BETIR(Δ). [A700+] – <u>LR440[R]</u> – LR441 – LR442[A3000-; R] – BETIR.	4000 ft	Santo Domingo ACC 124.300	
KARIB 1M	KARIB ONE MIKE Climb on track 288° to LR445; LT, on track 213° to KARIB(Δ). [A700+] – LR445[L] – KARIB.			
KATOK 1M	KATOK ONE MIKE Climb on track 288° to LR440; RT via LR441 on track 013° to LR442; RT, on track 065° to LR444; RT, on track 099° to KATOK(Δ). [A700+] – <u>LR440[R]</u> – LR441 – LR442[A3000-; R] – LR444[A4000-; R] – KATOK.			
KOBET 1M	KOBET ONE MIKE Climb on track 288° to LR440; RT via LR441 on track 013° to LR442; LT, on track 356° to LR443; LT, on track 325° to KOBET(Δ). [A700+] – <u>LR440[R]</u> – LR441 – LR442[A3000-; L] – LR443[A5000-; L] – KOBET.			
MELLA 1M	MELLA ONE MIKE Climb on track 288° to LR440; LT via LR446 on track 135° to LR447; LT, on track 106° to MELLA(Δ). [A700+] – <u>LR440[L]</u> – LR446 – LR447[A3000-; L] – MELLA.			
Sample: <u>LR440</u> Fly-Over Waypoint				
DME/DME not authorized.				

WAY POINT LIST

LA ROMANA
CASA DE CAMPO INTL

RNAV (GNSS) DEPARTURE ROUTES

IDENT	LAT	LONG
LR430	N 18 26 41.91	W 68 51 47.44
LR431	N 18 27 56.00	W 68 49 54.66
LR432	N 18 29 23.41	W 68 50 16.29
LR433	N 18 41 04.49	W 69 00 44.28
LR434	N 18 30 41.28	W 68 38 24.14
LR435	N 18 22 08.00	W 68 41 54.21
LR436	N 18 25 04.84	W 68 50 17.01
LR437	N 18 18 29.55	W 68 50 15.59
51.0 NM to KOBET	N 18 48 28.37	W 69 07 22.94
31.0 NM to BETIR	N 18 50 00.02	W 68 44 13.41
32.0 NM to KATOK	N 18 35 01.36	W 68 29 49.21
29.0 NM to MELLA	N 18 19 28.59	W 68 29 37.58
28.0 NM to KARIB	N 18 02 51.82	W 69 01 58.28
LR440	N 18 27 23.17	W 68 57 37.77
LR441	N 18 29 14.07	W 68 59 17.85
LR442	N 18 39 50.87	W 68 58 58.24
LR443	N 18 51 03.48	W 69 02 10.05
LR444	N 18 48 21.85	W 68 46 43.39
LR445	N 18 27 32.52	W 68 58 57.39
LR446	N 18 24 04.64	W 68 58 54.98
LR447	N 18 16 52.64	W 68 47 37.24
32.0 NM to BETIR	N 18 52 23.35	W 68 51 55.83
30.0 NM to MELLA	N 18 15 34.39	W 68 31 18.05
28.0 NM to KARIB	N 18 06 03.31	W 69 08 03.17
BETIR	N 19 20 35.11	W 68 36 16.47
KARIB	N 17 39 59.12	W 69 19 01.18
KATOK	N 18 50 00.00	W 68 00 00.00
KOBET	N 19 27 30.00	W 69 43 04.00
MELLA	N 18 13 00.00	W 68 00 00.00

Threshold Coordinates

THR	LAT	LONG
RWY 11	N 18 27 08.44	W 68 55 32.48
RWY 29	N 18 26 56.69	W 68 53 52.72