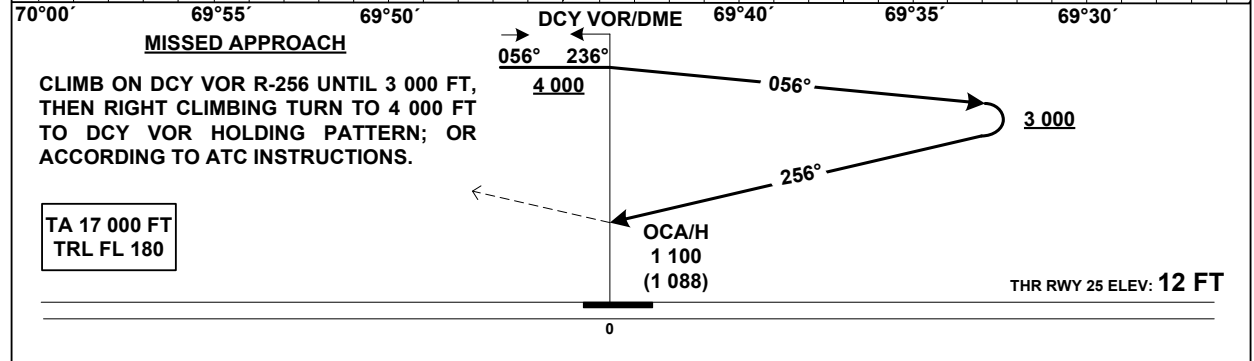
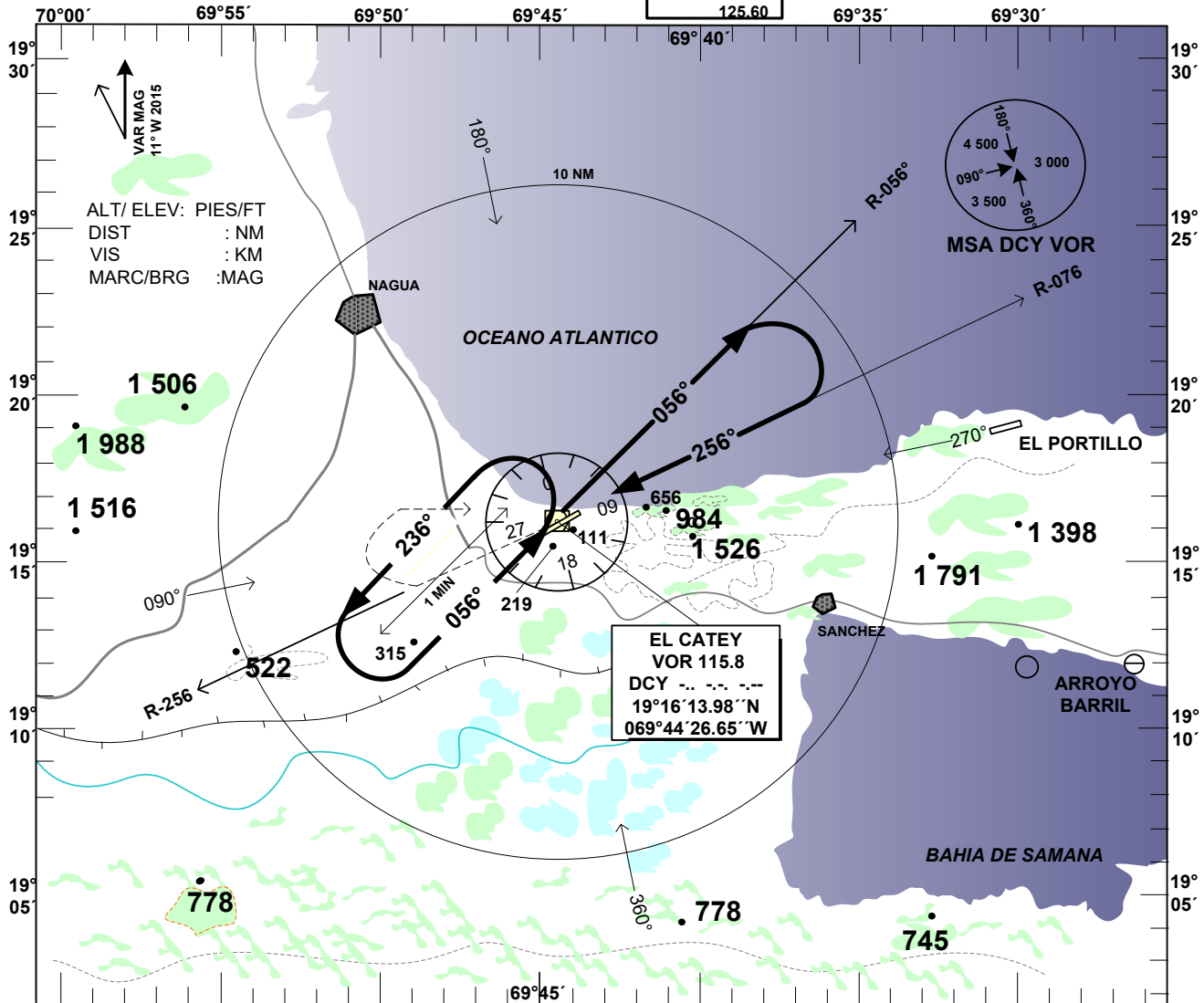


**INSTRUMENT
APPROACH CHART
IAC**

**AP ELEV
12 FT**

APP	119.00
TWR	119.95
122.20	121.70
ACC	124.30
	125.60

**SAMANA
EL CATEY INT'L
VOR RWY 25**



MISSED APPROACH
CLIMB ON DCY VOR R-256 UNTIL 3 000 FT,
THEN RIGHT CLIMBING TURN TO 4 000 FT
TO DCY VOR HOLDING PATTERN; OR
ACCORDING TO ATC INSTRUCTIONS.

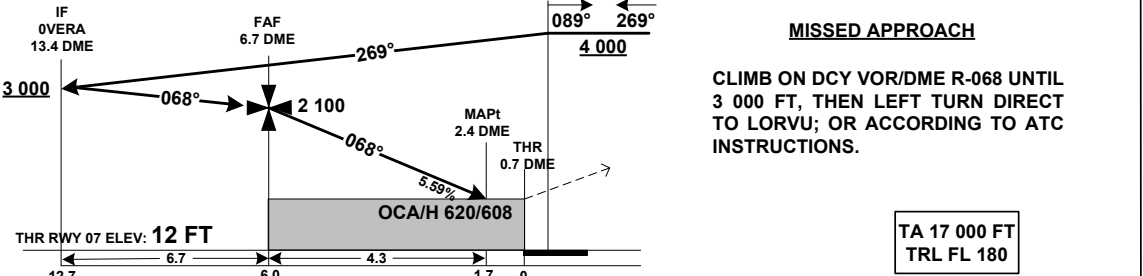
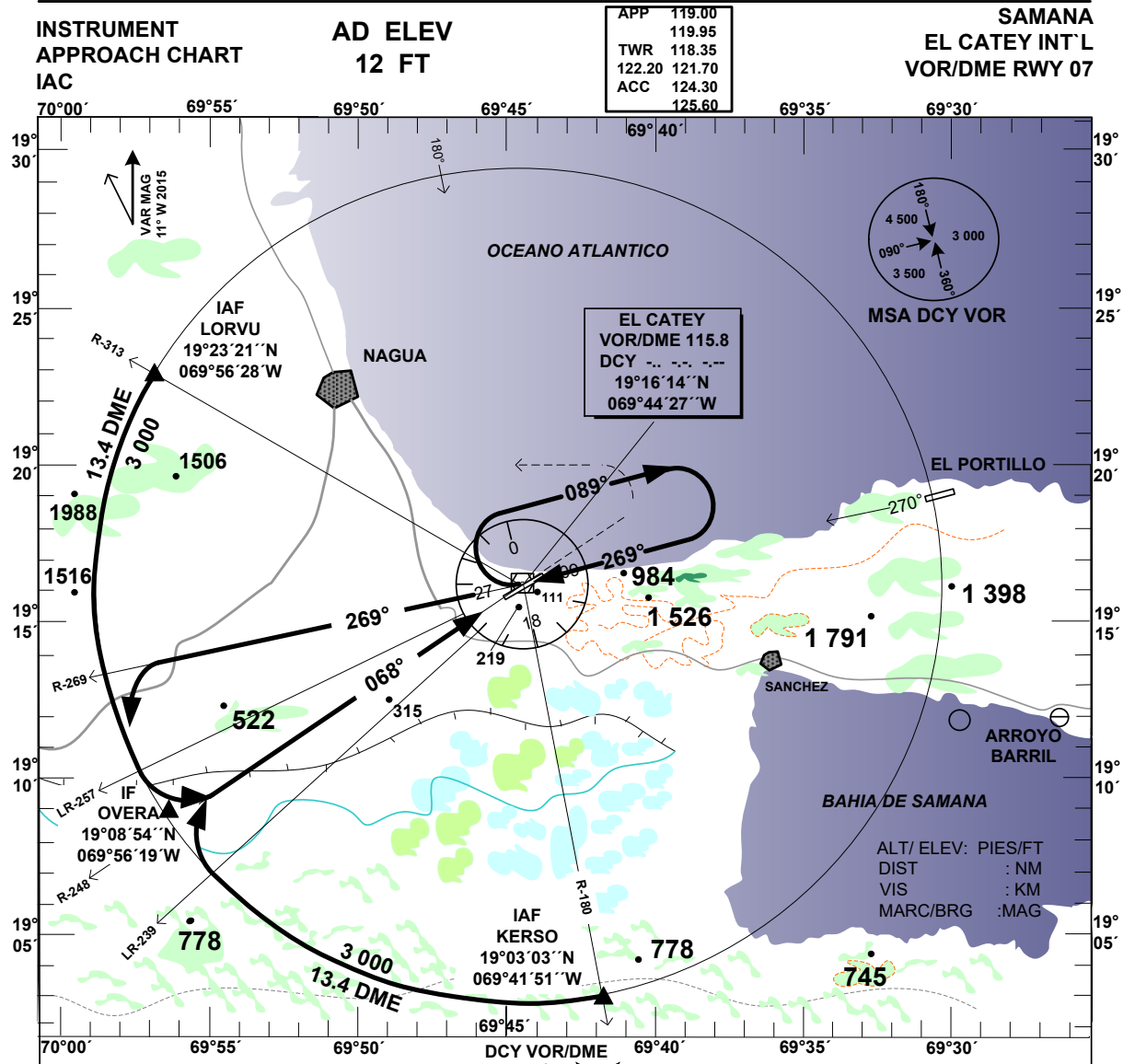
TA 17 000 FT
TRL FL 180

OCA/H
1 100
(1 088)

THR RWY 25 ELEV: 12 FT

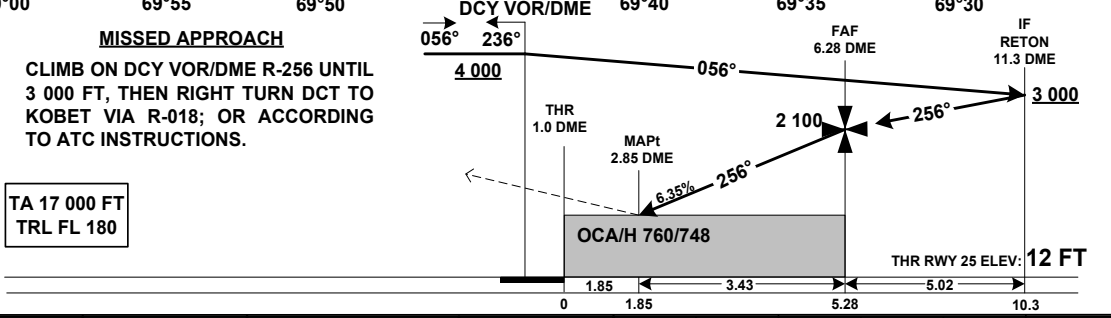
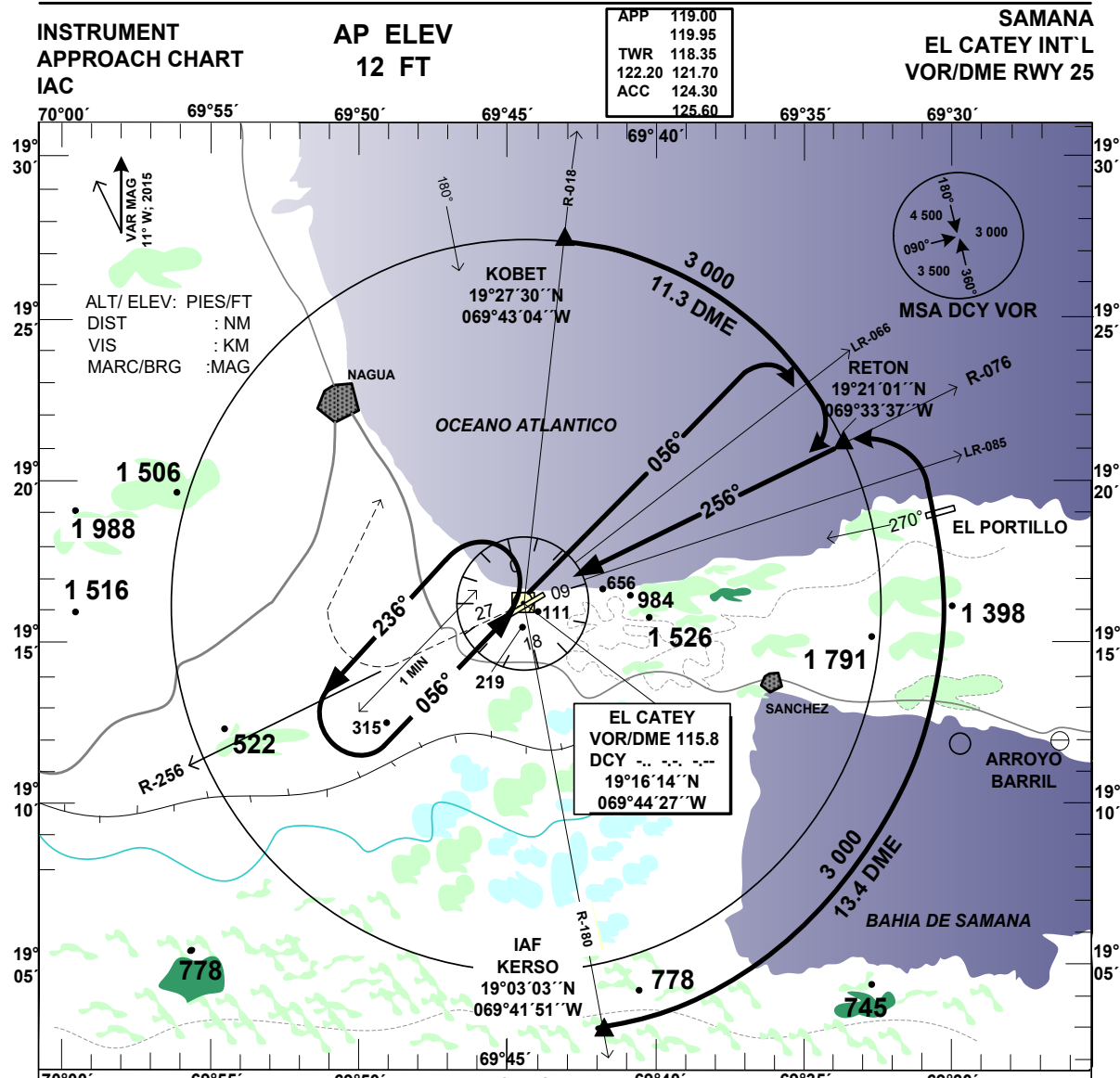
OCA/H, CEILING AND VISIBILITY MINIMUMS: TAKE-OFF AND LANDING

CATEGORY	A	B	C	D
STRAIGHT-IN RWY 25	1 100(1088) 1 100 2.8		1 100(1 088) 1 100 4.8	1 100(1088) 1 100 5.2
CIRCLING RWY 07	1 100(1088) 1 100 3.5		2 100 (2088) 2 100 5.2	



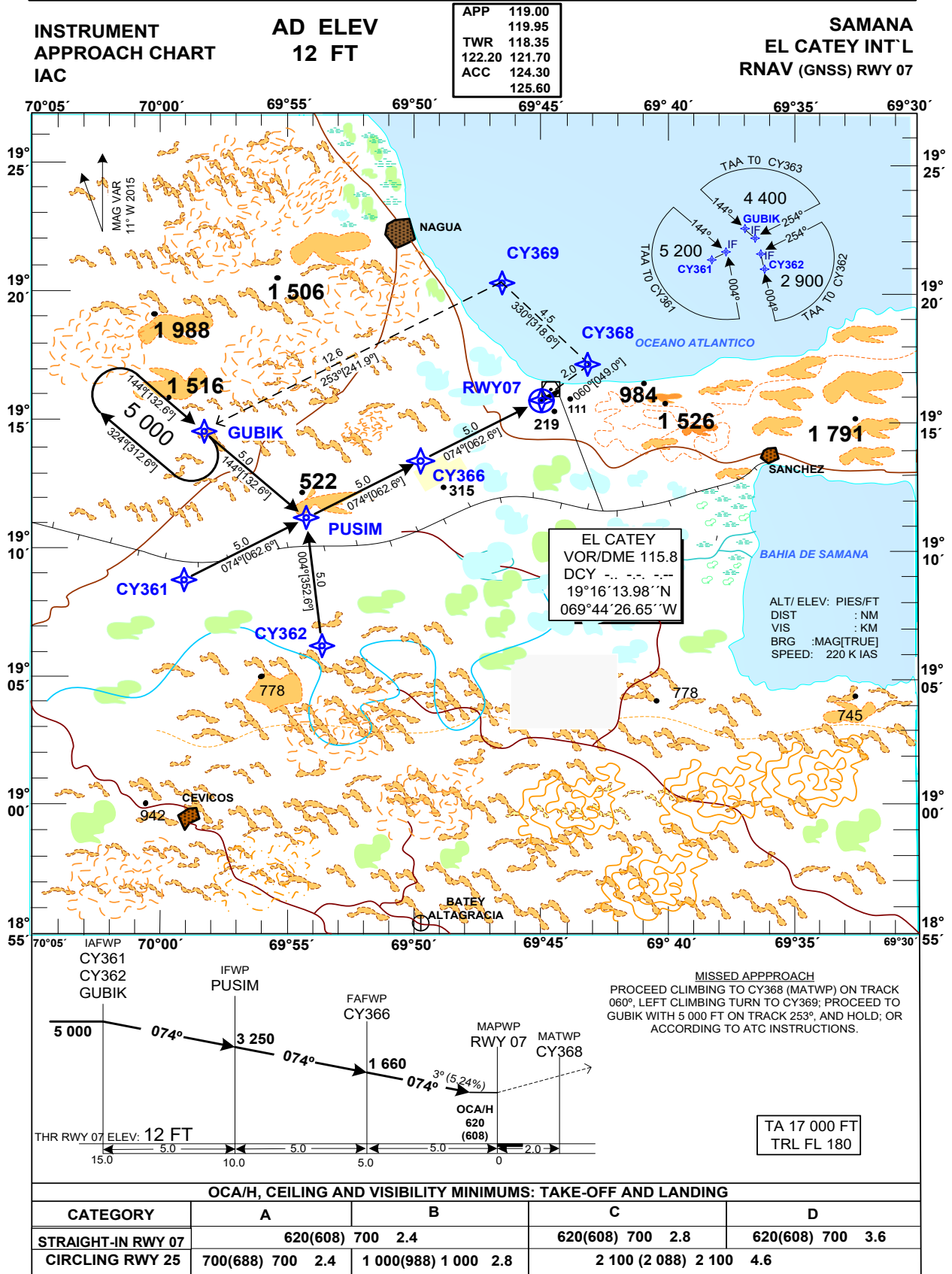
CAT	S RWY 07		CIRCLING RWY 25	GS (KTS)	80	100	120	140	160	180
	OCA/H, CEILING	VIS								
A	620 (608) 700	1.6	700 (688) 700 2.8	FAF-MAPt : MIN/SEG (4.3 NM)	3:14	2:35	2:09	1:50	1:37	1:26
B			1 000 (988) 1 000 2.8	FAF-THR: MIN/SEG (6.0 NM)	4:30	3:36	3:00	2:34	2:15	2:00
C			2 100 (2 088) 2 100 4.6	ROD : FT / MIN (FAF to MAPt)	427	535	642	750	857	965
D			3.2	DIST (DME) FAF-MAPt	FAF	5	4	3	2	MAPt
				ALTITUD	2 100	1 760	1 421	1 081	741	620

MDCY VOR/DME 07 PROCEDURE DATA					
PUNTO DE REF/ TERMINAL FIX		GEO. COOD	MARCACION (TRUE/MAG)	DIST. NM	GRAD. DESC
IAF:	LORVU	19°23'21.15''N 069°56'27.99''W	13.4 DME ARC	15.19	NIL
IAF:	KERSO	19°03'02.75''N 069°41'51.31''W	13.4 DME ARC	15.90	NIL
IF:	OVERA	19°08'54.02''N 069°56'18.90''W	057.08°/068.00°	6.7	NIL
FAF:	6.73 DME		057.08°/068.00°	6.00	5.59 %; 3.20°
MAPt:	2.4 DME DCY	19°14'55.24''N 069°46'34.29''W	057.08°/068.00°	1.7 THR 07	NIL
TP		NIL	NIL	NIL	NIL
MAHF:	DCY VOR	19°16'13.98''N 069°44'26.65''W	OB: 078.08°/089.00° IB: 258.08°/269.00°	NIL	NIL



CAT	S RWY 25		CIRCLING RWY 07	GS (KTS)						
	OCA/H, CEILING	VIS		80	100	120	140	160	180	
A	760 (748) 800	2.0	760(748) 800 2.8	FAF-MAPT: MIN/SEG (3.4 NM)	2:33	2:02	1:42	1:28	1:17	1:08
B			1 000 (988) 1 000 2.8	FAF-THR: MIN/SEG (5.3 NM)	3:59	3:11	2:39	2:16	1:59	1:46
C			3.6	ROD: FT / MIN (FAF to MAPt)	486	608	729	849	969	1097
D			4.0	2 100 (2 088) 2 100 4.6	DIST (DME) FAF-MAPT	FAF	5	4	3	2
				ALTTUD	2 100	1 991	1 605	1 219	834	760

MDCY VOR/DME 25 PROCEDURE DATA					
PUNTO DE REF/ TERMINAL FIX	GEO. COOD	MARCACION (TRUE/MAG)	DIST. NM	GRAD. DESC	
IAF: KOBET	19°27'30.30"N 069°43'04.14"W	11.3 DME ARC	11.43	NIL	
IAF: KERSO	19°03'02.75"N 069°41'51.31"W	13.4 DME ARC	24.31	NIL	
IF: RETON	19°21'01.30"N 069°33'36.78"W	245.08°/256.00°	5.02	NIL	
FAF: 6.28DME		245.08°/256.00°	5.28	6.35 %; 3.63°	
MAPt: 2.85 DME DCY	19°17'26.50"N 069°41'42.81"W	245.08°/256.00°	1.85 THR 25	NIL	
TP	NIL	NIL	NIL	NIL	
MAHF: DCY VOR	19°16'13.98"N 069°44'26.65"W	OB: 225.08°/236.00° IB: 045.08°/056.00°	NIL	NIL	



SAMANA
EL CATEY INT'L

WAY POINT LIST

RNAV (GNSS) RWY 07

CY361 (IAFWPc)	19° 08' 51.598"N	069° 59' 02.728"W
CY362 (IAFWPR)	19° 06' 11.842"N	069° 53' 40.720"W
GUBIK (IAFWPL)	19° 14' 34.292"N	069° 58' 14.916"W
PUSIM (IFWP)	19° 11' 10.489"N	069° 54' 21.523"W
CY366 (FAFWP)	19° 13' 29.260"N	069° 49' 40.187"W
RWY07 (MAPWP)	19° 15' 47.910"N	069° 44' 58.720"W
CY368 (MATWP)	19° 17' 06.932"N	069° 43' 22.978"W
CY369	19° 20' 31.458"N	069° 46' 30.305"W