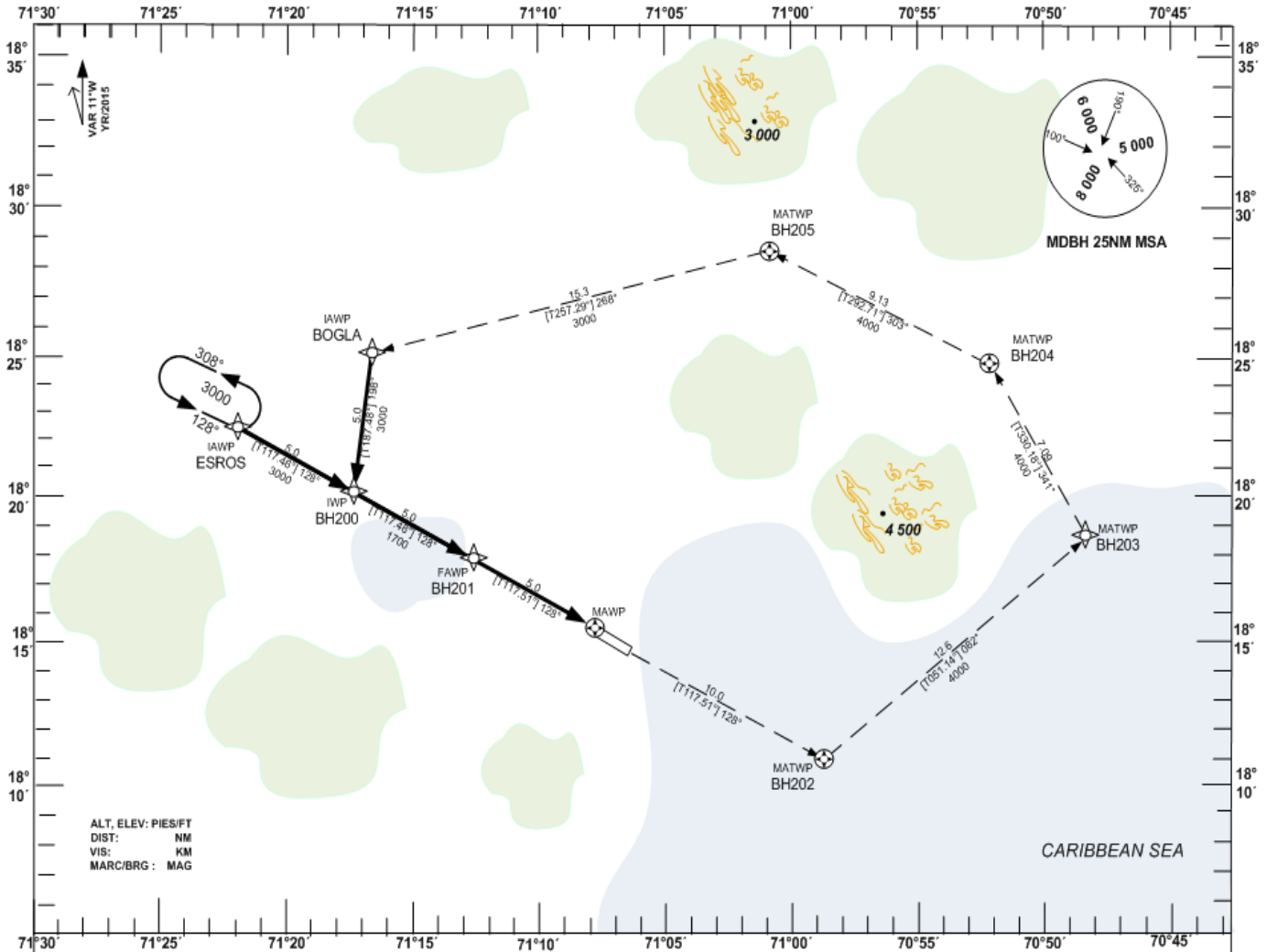


INSTRUMENT
APPROACH CHART
IAC

RWY
ELEV
12 FT

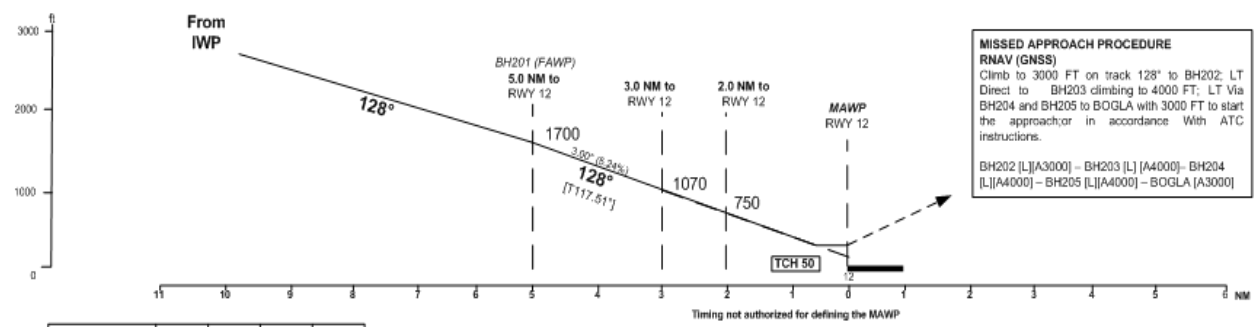
TWR 118.5
ACC N 124.3
ACC S 127.8
FIC 126.9

BARAHONA
MARIA MONTEZ INT'L
RNAV (GNSS) RWY 12



ALT, ELEV: PIES/FT
DIST: NM
VIS: KM
MARC/BRG: MAG

CARIBBEAN SEA



**MISSED APPROACH PROCEDURE
RNAV (GNSS)**
Climb to 3000 FT on track 128° to BH202; LT
Direct to BH203 climbing to 4000 FT; LT Via
BH204 and BH205 to BOGLA with 3000 FT to start
the approach in accordance With ATC
instructions.
BH202 [L][A3000] - BH203 [L] [A4000] - BH204
[L][A4000] - BH205 [L][A4000] - BOGLA [A3000]

OCA (OCH)	A	B	C	D
RNAV (GNSS)	384 (374)	384 (374)	384 (374)	384 (374)

GS	kt	80	100	120	140	160	180
FAWP - RWY 12 (5.0 NM)	MIN:SEC	3:45	3:00	2:30	2:08	1:52	1:40
Rate of descent (5.24%)	ft / MIN	410	520	630	730	840	940

**AEROPUERTO INT'L "MARIA MONTEZ"
BARAHONA, R.D.
MDBH RNAV (GNSS) RWY 12**

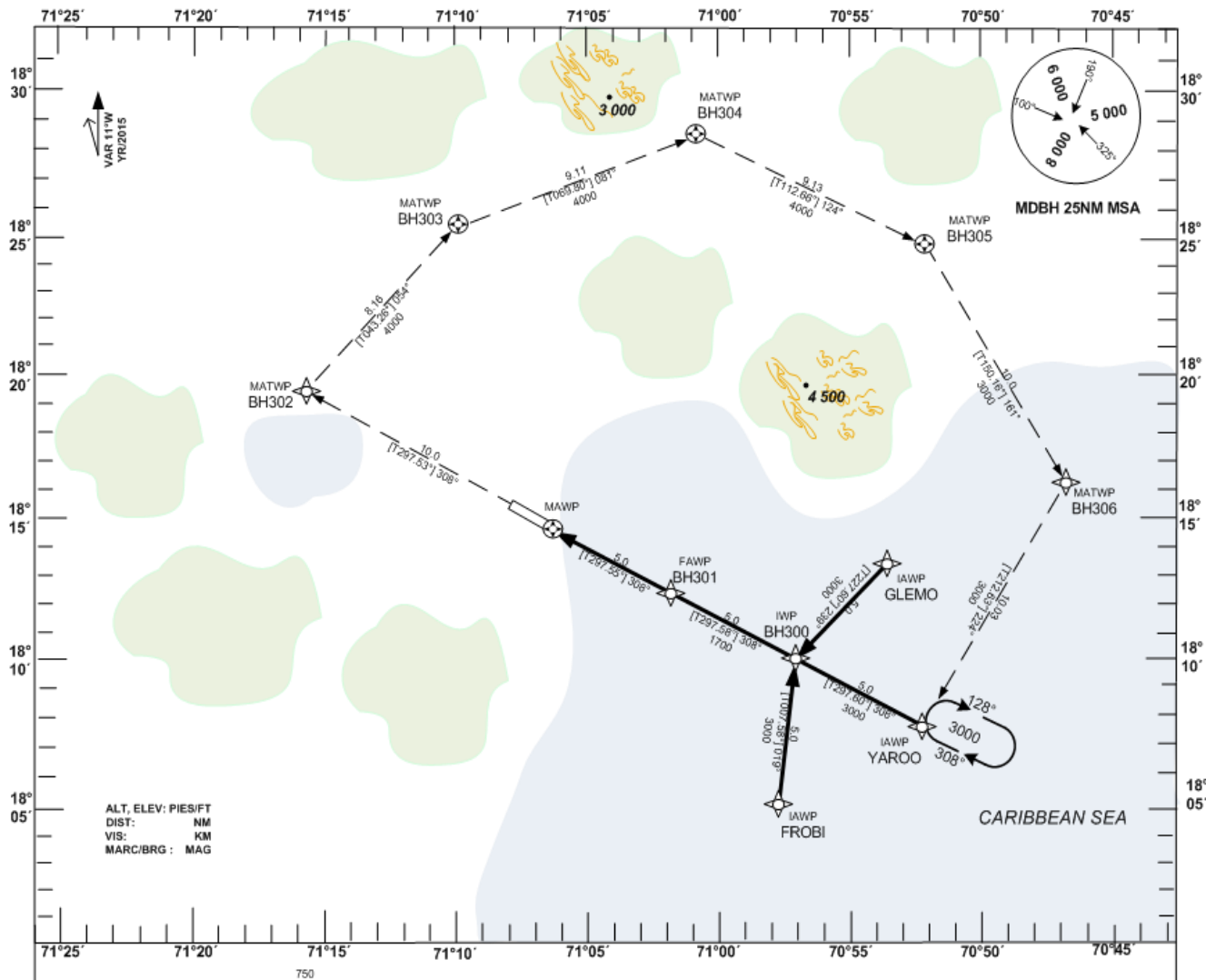
IDENT	LAT	LON
BOGLA	18°25'05.80"N	071°16'36.22"W
ESROS	18°22'26.11"N	071°21'57.15"W
BH200	18°20'07.18"N	071°17'17.30"W
BH201	18°17'48.14"N	071°12'37.57"W
MAWP (RWY 12)	18°15'28.99"N	071°07'57.97"W
BH202	18°10'50.53"N	070°58'39.04"W
BH203	18°18'46.74"N	070°48'19.90"W
BH204	18°24'57.18"N	070°52'02.40"W
BH205	18°28'29.25"N	071°00'54.07"W

**INSTRUMENT
APPROACH CHART
IAC**

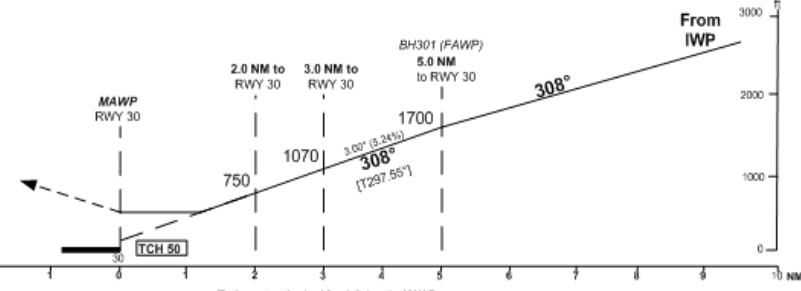
**RWY
ELEV
10 FT**

**TWR 118.5
ACC N 124.3
ACC S 127.8
FIC 126.9**

**BARAHONA
MARIA MONTEZ INT'L
RNAV (GNSS) RWY 30**



MISSED APPROACH PROCEDURE RNAV (GNSS)
Climb to 3000 FT on track 308° to BH302; RT Direct to BH303 climbing to 4000 FT; RT Via BH304 and BH305 with 4000 FT; RT Direct to BH306 Descending to 3000 FT; RT to YAROD and Hold; or in accordance With ATC instructions.
BH302 [R][A3000] – BH303 [R][A4000] – BH304 [R][A4000] – BH305 [R][A4000] – BH306 [R][A3000] – YARCO [H][A3000]



OCA (OCH)	A	B	C	D
RNAV (GNSS)	487 (477)	487 (477)	487 (477)	487 (477)

GS	kt	80	100	120	140	160	180
FAWP – RWY 30 (5.0 NM)	MIN:SEC	3:45	3:00	2:30	2:08	1:52	1:40
Rate of descent (5.24%)	ft / MIN	410	520	630	730	840	940

**AEROPUERTO INT'L "MARIA MONTEZ"
BARAHONA, R.D.
MDBH RNAV (GNSS) RWY 30**

IDENT	LAT	LON
FROBI	18°05'06.68"N	070°57'50.16"W
GLEMO	18°13'28.37"N	070°53'15.95"W
YAROO	18°07'45.75"N	070°52'29.41"W
BH300	18°10'05.24"N	070°57'08.62"W
BH301	18°12'24.62"N	071°01'47.95"W
MAWP (RWY 30)	18°14'43.89"N	071°06'27.41"W
BH302	18°19'22.08"N	071°15'46.70"W
BH303	18°25'20.01"N	071°09'53.78"W
BH304	18°28'29.25"N	071°00'54.07"W
BH305	18°24'57.18"N	070°52'02.40"W
BH306	18°16'14.61"N	070°46'48.67"W